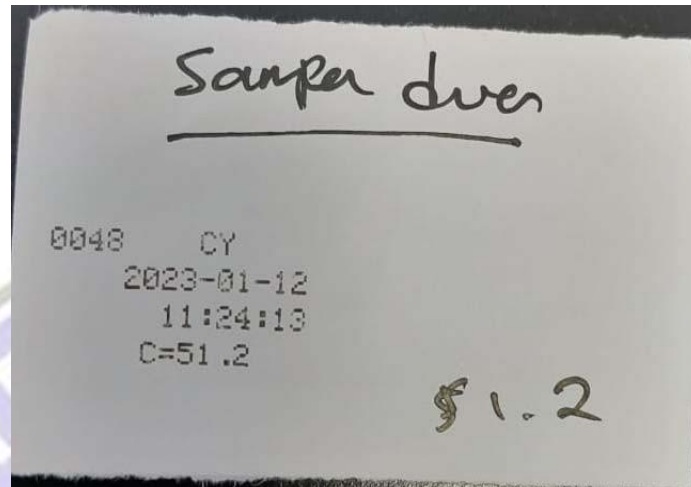


LAMPIRAN



ANTON PAAR

PMA 5-Version 1.19.2 82 Device No. 60088345

Date: 2023-01-12

OPERATOR default

SAMPLE NAME	PROG NAME	EFF C/F	SAMPLE C/F	FP STAT	Fpc C/F	Fpzd C/F	BAP KPa	GRADIENT C/F/min	IGN STAT	STOP STAT	TIME HH:MM	TEMP UNIT	START HH:MM	STOP HH:MM	DATE	DEVICE TYPE	SERIAL NO	DEVICE VERSION	OPERATOR NAME
80% 15% 5 D93-A		80	58.2	FpInvalid	58.5	58.5	100.1	5.1	E	Flash point	08:48	°C	08:40	08:48	12/01/2023	PMA 5	60088345	1.19.2 82	default



Determination

SampleName: **80% 10% 10%** Operator:

SampleMass(g)	1.0000	Formula	Bunte
Capacity(J/K)	14664		
Mad(%)	1.9	MI(%)	2.3
Sb.ad(%)	1.32	Had(%)	1.54

AutoID	Fore period	Main period	After period
1	28.835	28.968	32.399
2	28.829	29.684	32.398
3	28.824	30.443	32.396
4	28.821	31.017	32.394
5	28.817	31.426	32.392
6	28.813	31.697	32.391
7		31.866	32.388
8		31.976	32.385
9		32.062	32.382
10		32.119	32.379
11		32.164	
12		32.204	
13		32.236	
14		32.265	
15		32.285	
16		32.306	
17		32.322	
18		32.335	
19		32.347	
20		32.358	
21		32.366	
22		32.374	
23		32.380	
24		32.385	
25		32.390	
26		32.393	
27		32.396	
28		32.398	
29		32.399	
30		32.400	
31		32.400	

Determination

32	32.399	
=====		
Qb,ad(J/g)	Qgr,ad(J/g)	Qnet,ar(J/g)
53601	53414	52961
Time:	1/12/2023 11:27:45 AM	





