

LAMPIRAN-LAMPIRAN

Capture Delay di Ap 301

Wireshark capture showing network traffic on interface 0. The filter is set to 'Expression... Clear Apply Save'. The capture shows various protocols including NBNS, LLNMR, ARP, and User Datagram Protocol. The packet list shows the following details:

No.	Time	Source	Destination	Protocol	Length	Time delta from previous displayed frame	Info
1	0.00000000	172.4.0.18	172.4.255.255	NBNS	92	0.00000000	Name query NB WPAD<00>
2	0.00116200	172.4.0.59	172.4.255.255	NBNS	92	0.00116200	Name query NB WPAD<00>
3	0.10228800	172.4.0.21	172.4.255.255	NBNS	92	0.10112600	Name query NB PING.AVAST.COM<00>
4	0.10347100	172.4.0.52	172.4.255.255	NBNS	92	0.00118300	Name query NB WPAD<00>
5	0.20449900	fe80::c9e1:8d8d:c88f:02:1:3	224.0.0.252	LLNMR	86	0.10102800	Standard query 0x77b4 A isatap
6	0.20550300	fe80::c9e1:8d8d:c88f:02:1:3	224.0.0.252	LLNMR	66	0.00100400	Standard query 0x77b4 A isatap
7	0.30678100	fe80::c9e1:8d8d:c88f:02:1:3	224.0.0.252	LLNMR	86	0.10127800	Standard query 0x77b4 A isatap
8	0.30775700	fe80::c9e1:8d8d:c88f:02:1:3	224.0.0.252	LLNMR	66	0.00099400	Standard query 0x77b4 A isatap
9	0.51134000	172.4.0.42	172.4.255.255	NBNS	92	0.20356500	Name query NB ISATAP<00>
10	0.71591500	172.4.0.18	172.4.255.255	NBNS	92	0.20457300	Name query NB WPAD<00>
11	0.71712000	172.4.0.59	172.4.255.255	NBNS	92	0.00120500	Name query NB WPAD<00>
12	0.81815200	172.4.0.52	172.4.255.255	NBNS	92	0.10103200	Name query NB WPAD<00>
13	1.22727200	172.4.0.42	172.4.255.255	NBNS	92	0.40912000	Name query NB ISATAP<00>
14	1.53406000	fe80::cc8f:66e7:f47f:02:1:3	224.0.0.252	LLNMR	84	0.30678800	Standard query 0x57a1 A wpad
15	1.63679500	fe80::cc8f:66e7:f47f:02:1:3	224.0.0.252	LLNMR	84	0.10273500	Standard query 0x57a1 A wpad
16	1.63785100	172.4.0.18	172.4.0.18	LLNMR	64	0.00105600	Standard query 0x57a1 A wpad
17	1.73791800	172.4.0.90	172.4.0.1	DNS	85	0.10006700	Standard query 0x4cad A teredo.ipv6.microsoft.com
18	1.73837200	172.4.0.52	224.0.0.252	LLNMR	64	0.00043400	Standard query 0xd678 A wpad
19	1.73929000	ff::c3:ce:30	Broadcast	ARP	42	0.00085700	who has 53.52.50.97? Tell 172.2.242.96
20	1.74118100	fe80::8147:692e:da7f:02:1:3	224.0.0.252	LLNMR	84	0.00195200	Standard query 0xd678 A wpad
21	1.74231000	172.4.0.52	224.0.0.252	LLNMR	64	0.00112900	Standard query 0xd678 A wpad

Frame 1: 92 bytes on wire (736 bits), 92 bytes captured (736 bits) on interface 0
Ethernet II, Src: HonhaiPr_9d:b0:22 (c0:18:85:9d:b0:22), Dst: Broadcast (ff:ff:ff:ff:ff:ff)
Internet Protocol Version 4, Src: 172.4.0.18 (172.4.0.18), Dst: 172.4.255.255 (172.4.255.255)
User Datagram Protocol, Src Port: 137 (137), Dst Port: 137 (137)
NetBIOS Name Service

```
0000 ff ff ff ff ff ff c0 18 85 9d b0 22 08 00 45 00 .....E.  
0010 00 4e 5c 09 00 00 80 11 86 7b ac 04 00 12 ac 04 .N.....{.....  
0020 ff ff 00 89 00 89 00 3a b4 a9 b0 35 01 10 00 01 .....L.g.T)...  
0030 00 00 00 00 00 01 20 46 44 45 46 44 48 45 46 45 .....F.DEFDHEFE  
0040 4f 43 41 43 41 43 41 43 41 43 41 43 41 43 41 43 ACACACAC ACACACAC  
0050 41 43 41 43 41 43 41 00 00 20 01 c0 0c 00 20 ACACACA. ....  
0060 00 01 00 04 93 e0 00 06 60 00 ac 04 00 63 .....C
```

Capture delay Ip 172.4.0.99

Wireshark capture showing network traffic on interface 0. The filter is set to 'udp && ip.dst==172.4.255.255 && ip.src==172.4.0.99'. The capture shows various protocols including NBNS, BROWSE, and User Datagram Protocol. The packet list shows the following details:

No.	Time	Source	Destination	Protocol	Length	Time delta from previous displayed frame	Info
12021	569.041871	172.4.0.99	172.4.255.255	NBNS	110	0.00000000	Registration NB SE7EN<20>
12029	569.250161	172.4.0.99	172.4.255.255	NBNS	92	0.20829000	Name query NB ISATAP<00>
12048	569.761510	172.4.0.99	172.4.255.255	NBNS	110	0.51134900	Registration NB WORKGROUP<1e>
12049	569.860047	172.4.0.99	172.4.255.255	NBNS	110	0.09853700	Registration NB SE7EN<20>
12055	570.064448	172.4.0.99	172.4.255.255	NBNS	92	0.20440100	Name query NB ISATAP<00>
12072	570.579662	172.4.0.99	172.4.255.255	NBNS	110	0.51521400	Registration NB WORKGROUP<1e>
12073	570.581383	172.4.0.99	172.4.255.255	NBNS	110	0.00172100	Registration NB SE7EN<20>
12088	571.295912	172.4.0.99	172.4.255.255	NBNS	110	0.71452900	Registration NB WORKGROUP<1e>
12090	571.394131	172.4.0.99	172.4.255.255	NBNS	110	0.09821900	Registration NB SE7EN<20>
12108	571.809301	172.4.0.99	172.4.255.255	NBNS	92	0.41517000	Name query NB ISATAP<00>
12109	571.907439	172.4.0.99	172.4.255.255	NBNS	92	0.09813800	Name query NB WPAD<00>
12113	572.115121	172.4.0.99	172.4.255.255	NBNS	110	0.20768200	Registration NB SE7EN<00>
12114	572.116590	172.4.0.99	172.4.255.255	NBNS	110	0.00146900	Registration NB WORKGROUP<00>
12115	572.213397	172.4.0.99	172.4.255.255	BROWSE	243	0.09680700	Host Announcement SE7EN, workstation, Server, Print Queue Server,
12123	572.621232	172.4.0.99	172.4.255.255	NBNS	92	0.40783500	Name query NB ISATAP<00>
12124	572.622453	172.4.0.99	172.4.255.255	NBNS	92	0.00122100	Name query NB WPAD<00>
12127	572.832303	172.4.0.99	172.4.255.255	NBNS	110	0.20985000	Registration NB WORKGROUP<00>
12128	572.833861	172.4.0.99	172.4.255.255	NBNS	110	0.00155800	Registration NB SE7EN<00>
12149	573.345073	172.4.0.99	172.4.255.255	NBNS	92	0.51121200	Name query NB ISATAP<00>
12153	573.442903	172.4.0.99	172.4.255.255	NBNS	92	0.09783000	Name query NB WPAD<00>
12155	573.644119	172.4.0.99	172.4.255.255	NBNS	110	0.20121600	Registration NB WORKGROUP<00>

Frame 12021: 110 bytes on wire (880 bits), 110 bytes captured (880 bits) on interface 0
Ethernet II, Src: LiteonTe_58:b5:56 (44:6d:57:58:b5:56), Dst: Broadcast (ff:ff:ff:ff:ff:ff)
Internet Protocol Version 4, Src: 172.4.0.99 (172.4.0.99), Dst: 172.4.255.255 (172.4.255.255)
User Datagram Protocol, Src Port: 137 (137), Dst Port: 137 (137)
NetBIOS Name Service

```
0000 ff ff ff ff ff ff 44 6d 57 58 b5 56 08 00 45 00 .....DM WX.V..E.  
0010 00 60 00 1b 00 00 80 11 e2 06 ac 04 00 63 ac 04 .....C.....  
0020 ff ff 00 89 00 89 00 4c f2 71 d3 74 29 10 00 01 .....L.g.T)...  
0030 00 00 00 00 00 01 20 46 44 45 46 44 48 45 46 45 .....F.DEFDHEFE  
0040 4f 43 41 43 41 43 41 43 41 43 41 43 41 43 41 43 ACACACAC ACACACAC  
0050 41 43 41 43 41 43 41 00 00 20 01 c0 0c 00 20 ACACACA. ....  
0060 00 01 00 04 93 e0 00 06 60 00 ac 04 00 63 .....C
```

Capture delay Ip 172.4.0.29

Filter: udp && ip.dst==172.4.255.255 && ip.src==172.4.0.29

No.	Time	Source	Destination	Protocol	Length	Time delta from previous displayed frame	Info
12001	568.019004	172.4.0.29	172.4.255.255	NBNS	92	0.715904000	Name query NB WPAD<00>
12154	573.541725	172.4.0.29	172.4.255.255	NBNS	92	5.522721000	Name query NB WPAD<00>
12177	574.259814	172.4.0.29	172.4.255.255	NBNS	92	0.718089000	Name query NB WPAD<00>
12191	574.975278	172.4.0.29	172.4.255.255	NBNS	92	0.715464000	Name query NB WPAD<00>
12221	576.098538	172.4.0.29	172.4.255.255	NBNS	92	1.123260000	Name query NB WPAD<00>
12227	576.814431	172.4.0.29	172.4.255.255	NBNS	92	0.715893000	Name query NB WPAD<00>
12240	577.632626	172.4.0.29	172.4.255.255	NBNS	92	0.818195000	Name query NB WPAD<00>
12281	581.111209	172.4.0.29	172.4.255.255	NBNS	92	3.478583000	Name query NB WPAD<00>
12287	581.826869	172.4.0.29	172.4.255.255	NBNS	92	0.715660000	Name query NB WPAD<00>
12303	582.646670	172.4.0.29	172.4.255.255	NBNS	92	0.819801000	Name query NB WPAD<00>
12463	590.723451	172.4.0.29	172.4.255.255	NBNS	92	8.076781000	Name query NB WPAD<00>
12481	591.452211	172.4.0.29	172.4.255.255	NBNS	92	0.728760000	Name query NB WPAD<00>
12500	592.155193	172.4.0.29	172.4.255.255	NBNS	92	0.702982000	Name query NB WPAD<00>
12528	593.280209	172.4.0.29	172.4.255.255	NBNS	92	1.125016000	Name query NB WPAD<00>
12550	594.004411	172.4.0.29	172.4.255.255	NBNS	92	0.724202000	Name query NB WPAD<00>
12574	594.715012	172.4.0.29	172.4.255.255	NBNS	92	0.710601000	Name query NB WPAD<00>
12605	595.634618	172.4.0.29	172.4.255.255	NBNS	92	0.919606000	Name query NB WPAD<00>
12623	596.452869	172.4.0.29	172.4.255.255	NBNS	92	0.818251000	Name query NB WPAD<00>
12639	597.166919	172.4.0.29	172.4.255.255	NBNS	92	0.714050000	Name query NB WPAD<00>
12794	606.166439	172.4.0.29	172.4.255.255	NBNS	92	8.999520000	Name query NB PING.AVAST.COM<00>
12829	606.884817	172.4.0.29	172.4.255.255	NBNS	92	0.718378000	Name query NB PING.AVAST.COM<00>

Frame 12001: 92 bytes on wire (736 bits), 92 bytes captured (736 bits) on interface 0
 Ethernet II, Src: HonHaiPr_bd:41:f3 (f4:b7:e2:bd:41:f3), Dst: Broadcast (ff:ff:ff:ff:ff:ff)
 Internet Protocol Version 4, Src: 172.4.0.29 (172.4.0.29), Dst: 172.4.255.255 (172.4.255.255)
 User Datagram Protocol, Src Port: 137 (137), Dst Port: 137 (137)
 NetBIOS Name Service

```

0000 ff ff ff ff ff ff f4 b7 e2 bd 41 f3 08 00 45 00 .....A.A.E.
0010 00 4e 29 fe 00 00 80 11 c1 7b ac 04 00 1d ac 04 .N.....3..
0020 ff ff 00 89 00 89 00 3a 8c f4 d7 df 01 10 00 01 .....f.....
0030 00 00 00 00 00 00 20 46 48 46 41 45 42 45 45 45 .....FHFABEEC
0040 41 43 41 43 41 43 41 43 41 43 41 43 41 43 41 43 ACACACAC ACACACAC
0050 41 43 41 43 41 41 00 00 20 00 01 ACACAAA...
    
```

File: "E:\semester7\skripsiku qos\wireshark\... Packets: 66839 - Displayed: 642 (1,0%) - Load time: 0:01:670 Profile: Default

Capture delay Ip 172.4.0.51

Filter: udp && ip.dst==172.4.255.255 && ip.src==172.4.0.51

No.	Time	Source	Destination	Protocol	Length	Time delta from previous displayed frame	Info
11660	611.996821	172.4.0.51	172.4.255.255	NBNS	92	0.721212000	Name query NB ISATAP<00>
13007	611.996821	172.4.0.51	172.4.255.255	NBNS	92	60.436195000	Name query NB WPAD<00>
13037	612.727898	172.4.0.51	172.4.255.255	NBNS	92	0.731077000	Name query NB WPAD<00>
13070	613.540552	172.4.0.51	172.4.255.255	NBNS	92	0.812654000	Name query NB WPAD<00>
13513	628.463545	172.4.0.51	172.4.255.255	NBNS	92	14.922993000	Name query NB WPAD<00>
13534	629.178836	172.4.0.51	172.4.255.255	NBNS	92	0.715291000	Name query NB WPAD<00>
13555	629.893537	172.4.0.51	172.4.255.255	NBNS	92	0.714701000	Name query NB WPAD<00>
13639	632.554381	172.4.0.51	172.4.255.255	NBNS	92	2.660844000	Name query NB I.SIMPLI.FI<00>
13640	632.555842	172.4.0.51	172.4.255.255	NBNS	92	0.001261000	Name query NB CM.ADGRX.COM<00>
13646	632.757156	172.4.0.51	172.4.255.255	NBNS	92	0.201514000	Name query NB FEEDJIT.COM<00>
13663	632.967582	172.4.0.51	172.4.255.255	NBNS	92	0.210426000	Name query NB WWW.BLOGGER.COM<00>
13676	633.370812	172.4.0.51	172.4.255.255	NBNS	92	0.403230000	Name query NB I.SIMPLI.FI<00>
13677	633.372139	172.4.0.51	172.4.255.255	NBNS	92	0.001327000	Name query NB CM.ADGRX.COM<00>
13686	633.480646	172.4.0.51	172.4.255.255	NBNS	92	0.108507000	Name query NB FEEDJIT.COM<00>
13698	634.089624	172.4.0.51	172.4.255.255	NBNS	92	0.608978000	Name query NB CM.ADGRX.COM<00>
13703	634.299125	172.4.0.51	172.4.255.255	NBNS	92	0.209501000	Name query NB FEEDJIT.COM<00>
13716	634.497445	172.4.0.51	172.4.255.255	NBNS	92	0.198320000	Name query NB WWW.BLOGGER.COM<00>
14151	643.803318	172.4.0.51	172.4.255.255	NBNS	92	9.305873000	Name query NB APIS.GOOGLE.COM<00>
14170	644.622385	172.4.0.51	172.4.255.255	NBNS	92	0.819067000	Name query NB APIS.GOOGLE.COM<00>
14175	644.827167	172.4.0.51	172.4.255.255	NBNS	92	0.204782000	Name query NB CFS.U-AD.INFO<00>
14197	645.241091	172.4.0.51	172.4.255.255	NBNS	92	0.413924000	Name query NB T.DTSCOUT.COM<00>

Frame 11660: 92 bytes on wire (736 bits), 92 bytes captured (736 bits) on interface 0
 Ethernet II, Src: LiteonTe_45:a8:3a (48:d2:24:45:a8:3a), Dst: Broadcast (ff:ff:ff:ff:ff:ff)
 Internet Protocol Version 4, Src: 172.4.0.51 (172.4.0.51), Dst: 172.4.255.255 (172.4.255.255)
 User Datagram Protocol, Src Port: 137 (137), Dst Port: 137 (137)
 NetBIOS Name Service

```

0000 ff ff ff ff ff ff 48 d2 24 45 a8 3a 08 00 45 00 .....H.$E...E.
0010 00 4e 01 be 00 00 80 11 e0 a5 ac 04 00 33 ac 04 .N.....3..
0020 ff ff 00 89 00 89 00 3a b0 b5 ae 03 01 10 00 01 .....f.....
0030 00 00 00 00 00 00 20 45 4a 46 44 45 42 46 45 45 .....EJFDEBFEE
0040 42 46 41 43 41 43 41 43 41 43 41 43 41 43 41 43 BFACACAC ACACACAC
0050 41 43 41 43 41 41 00 00 20 00 01 BFACAAA...
    
```

File: "E:\semester7\skripsiku qos\wireshark\... Packets: 66839 - Displayed: 428 (0,6%) - Load time: 0:01:650 Profile: Default

Capture Delay di Ap 303

File Edit View Go Capture Analyze Statistics Telephony Tools Internals Help

Filter: Expression... Clear Apply Save

No.	Time	Source	Destination	Protocol	Length	Time delta from previous displayed frame	Info
1	0.00000000	172.2.242.145	172.2.255.255	NBNS	92	0.00000000	Name query NB ISATAP<00>
2	0.76455500	172.2.242.145	172.2.255.255	NBNS	92	0.76455500	Name query NB ISATAP<00>
3	0.87988300	LiteontEc:64:dc	Broadcast	ARP	42	0.11532800	Gratuitous ARP for 172.2.242.213 (Request)
4	0.98092600	LiteontEc:64:dc	Broadcast	ARP	42	0.10104300	Who has 172.2.0.1? Tell 172.2.242.213
5	0.99845800	172.2.242.145	172.2.0.1	DNS	83	0.01733200	Standard query 0x3ece A 6to4.ipv6.microsoft.com
6	0.99853200	172.2.242.145	192.168.0.200	DNS	83	0.00009400	Standard query 0x3ece A 6to4.ipv6.microsoft.com
7	1.27927700	172.2.242.145	172.2.0.1	DNS	85	0.28072500	Standard query 0x9d85 A teredo.ipv6.microsoft.com
8	1.27937700	172.2.242.145	192.168.0.200	DNS	85	0.00010000	Standard query 0x9d85 A teredo.ipv6.microsoft.com
9	1.52951500	fe80::59a8:8f95:a7ff:02::1:3		LLMNR	86	0.25013800	Standard query 0x15ab A isatap
10	1.52972400	172.2.242.145	224.0.0.252	LLMNR	66	0.00020900	Standard query 0x15ab A isatap
11	1.63810300	fe80::59a8:8f95:a7ff:02::1:3		LLMNR	86	0.10837900	Standard query 0x15ab A isatap
12	1.63821200	172.2.242.145	224.0.0.252	LLMNR	66	0.00010900	Standard query 0x15ab A isatap
13	1.84120500	172.2.242.145	172.2.255.255	NBNS	92	0.20299300	Name query NB ISATAP<00>
14	2.00413400	fe80::844e:d5a1:fadff:02::1:3		LLMNR	95	0.16292900	Standard query 0x1bcd A wsdsyppbrhywiv
15	2.00512900	172.2.242.213	224.0.0.252	LLMNR	75	0.00099500	Standard query 0x1bcd A wsdsyppbrhywiv
16	2.00635200	fe80::844e:d5a1:fadff:02::1:3		LLMNR	92	0.00123300	Standard query 0xde33 A vxzlmajvrox
17	2.00730400	172.2.242.213	224.0.0.252	LLMNR	72	0.00095200	Standard query 0xde33 A vxzlmajvrox
18	2.00849700	fe80::844e:d5a1:fadff:02::1:3		LLMNR	87	0.00119300	Standard query 0x9d35 A oktnjik
19	2.00950100	172.2.242.213	224.0.0.252	LLMNR	67	0.00100400	Standard query 0x9d35 A oktnjik
20	2.00953100	fe80::59a8:8f95:a7ff:02::1:2		DHCPv6	151	0.08103000	Solicit XID: 0x850b5e CID: 000100011c1d960be89a8fbc3135
21	2.10626100	fe80::844e:d5a1:fadff:02::1:3		LLMNR	95	0.01573000	Standard query 0x1bcd A wsdsyppbrhywiv

Frame 1: 92 bytes on wire (736 bits), 92 bytes captured (736 bits) on interface 0
 Ethernet II, Src: HonhaiPr_71:0d:86 (94:39:e5:71:0d:86), Dst: Broadcast (ff:ff:ff:ff:ff:ff)
 Internet Protocol Version 4, Src: 172.2.242.145 (172.2.242.145), Dst: 172.2.255.255 (172.2.255.255)
 User Datagram Protocol, Src Port: 137 (137), Dst Port: 137 (137)
 NetBIOS Name Service

```

0000 ff ff ff ff ff ff 34 39 e5 71 0d 86 08 00 45 00 .....9.q....E.
0010 00 4e 1d 83 00 00 80 11 d2 85 ac 02 f2 91 ac 02 .N.....
0020 ff ff 00 89 00 89 00 3a a3 7e c8 df 01 10 00 01 .....:~.....
0030 00 00 00 00 00 20 45 4a 46 44 45 42 46 45 45 .....E JFDEBFEE
0040 42 46 41 43 41 43 41 43 41 43 41 43 41 43 41 43 BFACACAC ACACACAC
0050 41 43 41 43 41 41 00 00 20 00 01 ACACAAA...
    
```

File: "E:\semester7\skripsiku qos\wireshark\... Packets: 24055 - Displayed: 24055 (100.0%) - Load time: 0:00.589 Profile: Default

Capture delay Ip 172.2.242.145

File Edit View Go Capture Analyze Statistics Telephony Tools Internals Help

Filter: udp & ip.dst==172.2.255.255 & ip.src==172.2.242.145

No.	Time	Source	Destination	Protocol	Length	Time delta from previous displayed frame	Info
1	0.00000000	172.2.242.145	172.2.255.255	NBNS	92	0.00000000	Name query NB ISATAP<00>
2	0.76455500	172.2.242.145	172.2.255.255	NBNS	92	0.76455500	Name query NB ISATAP<00>
13	1.84120500	172.2.242.145	172.2.255.255	NBNS	92	0.20299300	Name query NB ISATAP<00>
31	2.60523800	172.2.242.145	172.2.255.255	NBNS	92	0.76403300	Name query NB ISATAP<00>
36	3.36965600	172.2.242.145	172.2.255.255	NBNS	92	0.76441800	Name query NB ISATAP<00>
47	4.44643200	172.2.242.145	172.2.255.255	NBNS	92	1.07677600	Name query NB ISATAP<00>
50	5.21031400	172.2.242.145	172.2.255.255	NBNS	92	0.76388200	Name query NB ISATAP<00>
53	5.97484400	172.2.242.145	172.2.255.255	NBNS	92	0.76453000	Name query NB ISATAP<00>
60	7.05153200	172.2.242.145	172.2.255.255	NBNS	92	1.07670800	Name query NB ISATAP<00>
62	7.81558300	172.2.242.145	172.2.255.255	NBNS	92	0.76403100	Name query NB ISATAP<00>
63	8.57037600	172.2.242.145	172.2.255.255	NBNS	92	0.75479300	Name query NB ASPIRE-PC<1>
64	8.57990800	172.2.242.145	172.2.255.255	NBNS	92	0.00953200	Name query NB ISATAP<00>
67	9.32874800	172.2.242.145	172.2.255.255	NBNS	92	0.74884000	Name query NB ASPIRE-PC<1>
75	9.65709400	172.2.242.145	172.2.255.255	NBNS	92	0.32834600	Name query NB ISATAP<00>
80	10.09311500	172.2.242.145	172.2.255.255	NBNS	92	0.43602100	Name query NB ASPIRE-PC<1>
82	10.42075100	172.2.242.145	172.2.255.255	NBNS	92	0.32763600	Name query NB ISATAP<00>
86	11.18511000	172.2.242.145	172.2.255.255	NBNS	92	0.76435900	Name query NB ISATAP<00>
95	12.26195800	172.2.242.145	172.2.255.255	NBNS	92	1.07684800	Name query NB ISATAP<00>
98	13.02591500	172.2.242.145	172.2.255.255	NBNS	92	0.76395700	Name query NB ISATAP<00>
104	13.79026200	172.2.242.145	172.2.255.255	NBNS	92	0.76434700	Name query NB ISATAP<00>
110	14.86732800	172.2.242.145	172.2.255.255	NBNS	92	1.07706600	Name query NB ISATAP<00>

Frame 1: 92 bytes on wire (736 bits), 92 bytes captured (736 bits) on interface 0
 Ethernet II, Src: HonhaiPr_71:0d:86 (94:39:e5:71:0d:86), Dst: Broadcast (ff:ff:ff:ff:ff:ff)
 Internet Protocol Version 4, Src: 172.2.242.145 (172.2.242.145), Dst: 172.2.255.255 (172.2.255.255)
 User Datagram Protocol, Src Port: 137 (137), Dst Port: 137 (137)
 NetBIOS Name Service

```

0000 ff ff ff ff ff ff 34 39 e5 71 0d 86 08 00 45 00 .....9.q....E.
0010 00 4e 1d 83 00 00 80 11 d2 85 ac 02 f2 91 ac 02 .N.....
0020 ff ff 00 89 00 89 00 3a a3 7e c8 df 01 10 00 01 .....:~.....
0030 00 00 00 00 00 20 45 4a 46 44 45 42 46 45 45 .....E JFDEBFEE
0040 42 46 41 43 41 43 41 43 41 43 41 43 41 43 41 43 BFACACAC ACACACAC
0050 41 43 41 43 41 41 00 00 20 00 01 ACACAAA...
    
```

File: "E:\semester7\skripsiku qos\wireshark\... Packets: 24055 - Displayed: 62 (0.3%) - Load time: 0:00.668 Profile: Default

Capture delay Ip 172.2.242.213

Filter: `udp && ip.dst==172.2.255.255 && ip.src==172.2.242.213`

No.	Time	Source	Destination	Protocol	Length	Time delta from previous displayed frame	Info
27	2.00973500	172.2.242.213	172.2.255.255	NBNS	92	0.001050000	Name query NB WDSYYPBRHYWIV<00>
28	3.31078900	172.2.242.213	172.2.255.255	NBNS	92	0.101054000	Name query NB VXZLMBAJVROX<00>
29	2.31198400	172.2.242.213	172.2.255.255	NBNS	92	0.001195000	Name query NB OKTNJIK<00>
32	3.02672700	172.2.242.213	172.2.255.255	NBNS	92	0.421489000	Name query NB WDSYYPBRHYWIV<00>
33	3.02792300	172.2.242.213	172.2.255.255	NBNS	92	0.001196000	Name query NB VXZLMBAJVROX<00>
34	3.02907300	172.2.242.213	172.2.255.255	NBNS	92	0.001150000	Name query NB OKTNJIK<00>
37	3.74277600	172.2.242.213	172.2.255.255	NBNS	92	0.373120000	Name query NB WDSYYPBRHYWIV<00>
38	3.74391000	172.2.242.213	172.2.255.255	NBNS	92	0.001134000	Name query NB VXZLMBAJVROX<00>
39	3.74521000	172.2.242.213	172.2.255.255	NBNS	92	0.001300000	Name query NB OKTNJIK<00>
105	14.48206800	172.2.242.213	172.2.255.255	NBNS	92	10.736858000	Name query NB WWW.GOOGLE.COM<00>
111	15.19707000	172.2.242.213	172.2.255.255	NBNS	92	0.715002000	Name query NB WWW.GOOGLE.COM<00>

Frame 27: 92 bytes on wire (736 bits), 92 bytes captured (736 bits) on interface 0
 Ethernet II, Src: Liteontec:64:dc (74:de:2b:ec:64:dc), Dst: Broadcast (ff:ff:ff:ff:ff:ff)
 Internet Protocol Version 4, Src: 172.2.242.213 (172.2.242.213), Dst: 172.2.255.255 (172.2.255.255)
 User Datagram Protocol, Src Port: 137 (137), Dst Port: 137 (137)
 NetBIOS Name Service

```

0000 ff ff ff ff ff ff 74 de 2b ec 64 dc 08 00 45 00 .....t.+.d...E.
0010 00 4e 09 f4 00 00 80 11 e6 5a ac 02 f2 4b ac 02 ..N.....Z...K..
0020 ff ff 00 89 00 89 00 3a 57 ca ad cd 01 10 00 01 .....:W.....
0030 00 00 00 00 00 00 20 45 42 46 43 45 4e 45 4e 45 .....E BFCENENE
0040 47 43 4f 45 42 45 45 50 45 43 45 46 43 4f 45 GCOEBEE PECEFCOE
0050 44 45 50 45 4e 41 41 00 00 20 00 01 DEPENAA...
  
```

File: "E:\semester7\skripsiku qos\wireshark\c... Packets: 24055 - Displayed: 11 (0.0%) - Load time: 0:00:67 Profile: Default

Capture delay Ip 172.2.242.75

Filter: `udp && ip.dst==172.2.255.255 && ip.src==172.2.242.75`

No.	Time	Source	Destination	Protocol	Length	Time delta from previous displayed frame	Info
30	2.31317700	172.2.242.75	172.2.255.255	NBNS	92	0.001193000	Name query NB ARMMF.ADOBE.COM<00>
35	3.03016600	172.2.242.75	172.2.255.255	NBNS	92	0.001093000	Name query NB ARMMF.ADOBE.COM<00>
40	3.74648100	172.2.242.75	172.2.255.255	NBNS	92	0.001271000	Name query NB ARMMF.ADOBE.COM<00>
78	9.98118900	172.2.242.75	172.2.255.255	NBNS	92	6.234708000	Name query NB WPAD<00>
83	10.69722400	172.2.242.75	172.2.255.255	NBNS	92	0.716035000	Name query NB WPAD<00>
87	11.41300700	172.2.242.75	172.2.255.255	NBNS	92	0.715783000	Name query NB WPAD<00>
117	16.62885800	172.2.242.75	172.2.255.255	NBNS	92	5.215851000	Name query NB ARMMF.ADOBE.COM<00>
124	17.34808500	172.2.242.75	172.2.255.255	NBNS	92	0.719227000	Name query NB ARMMF.ADOBE.COM<00>
127	18.06066200	172.2.242.75	172.2.255.255	NBNS	92	0.712577000	Name query NB ARMMF.ADOBE.COM<00>
157	23.37877400	172.2.242.75	172.2.255.255	NBNS	92	5.318112000	Name query NB WPAD<00>
160	24.19694700	172.2.242.75	172.2.255.255	NBNS	92	0.818173000	Name query NB WPAD<00>
167	24.50377300	172.2.242.75	172.2.255.255	NBNS	92	0.306826000	Name query NB WPAD<00>
169	24.91289200	172.2.242.75	172.2.255.255	NBNS	92	0.409119000	Name query NB WPAD<00>
177	25.32193100	172.2.242.75	172.2.255.255	NBNS	92	0.409039000	Name query NB WPAD<00>
181	26.03784700	172.2.242.75	172.2.255.255	NBNS	92	0.715916000	Name query NB WPAD<00>
204	30.94689900	172.2.242.75	172.2.255.255	NBNS	92	4.909052000	Name query NB ARMMF.ADOBE.COM<00>
207	31.66278300	172.2.242.75	172.2.255.255	NBNS	92	0.715884000	Name query NB ARMMF.ADOBE.COM<00>
209	32.48095900	172.2.242.75	172.2.255.255	NBNS	92	0.818176000	Name query NB ARMMF.ADOBE.COM<00>
256	39.12864500	172.2.242.75	172.2.255.255	NBNS	92	6.647686000	Name query NB WPAD<00>
262	39.84804200	172.2.242.75	172.2.255.255	NBNS	92	0.719397000	Name query NB WPAD<00>
268	40.56192300	172.2.242.75	172.2.255.255	NBNS	92	0.713881000	Name query NB WPAD<00>
287	45.26490700	172.2.242.75	172.2.255.255	NBNS	92	4.702984000	Name query NB ARMMF.ADOBE.COM<00>
290	45.98082100	172.2.242.75	172.2.255.255	NBNS	92	0.715914000	Name query NB ARMMF.ADOBE.COM<00>

Frame 30: 92 bytes on wire (736 bits), 92 bytes captured (736 bits) on interface 0
 Ethernet II, Src: Azurewaw_49:96:50 (74:2f:68:49:96:50), Dst: Broadcast (ff:ff:ff:ff:ff:ff)
 Internet Protocol Version 4, Src: 172.2.242.75 (172.2.242.75), Dst: 172.2.255.255 (172.2.255.255)
 User Datagram Protocol, Src Port: 137 (137), Dst Port: 137 (137)
 NetBIOS Name Service

```

0000 ff ff ff ff ff ff 74 2f 68 49 96 50 08 00 45 00 .....T/hi.P...E.
0010 00 4e 09 f4 00 00 80 11 e6 5a ac 02 f2 4b ac 02 ..N.....Z...K..
0020 ff ff 00 89 00 89 00 3a 57 ca ad cd 01 10 00 01 .....:W.....
0030 00 00 00 00 00 00 20 45 42 46 43 45 4e 45 4e 45 .....E BFCENENE
0040 47 43 4f 45 42 45 45 50 45 43 45 46 43 4f 45 GCOEBEE PECEFCOE
0050 44 45 50 45 4e 41 41 00 00 20 00 01 DEPENAA...
  
```

File: "E:\semester7\skripsiku qos\wireshark\c... Packets: 24055 - Displayed: 946 (3.9%) - Load time: 0:00:67 Profile: Default

Capture Delay di Ap 408

Filter: Expression... Clear Apply Save

No.	Time	Source	Destination	Protocol	Length	Time delta from previous displayed frame	Info
1	0.000000000	172.2.242.145	172.2.255.255	NBNS	92	0.000000000	Name query NB ISATAP<0>
2	0.475417000	172.2.242.145	239.255.255.250	SSDP	136	0.475417000	M-SEARCH * HTTP/1.1
3	0.672972000	172.2.242.126	172.2.255.255	NBNS	92	0.197555000	Name query NB PLATAD<1>
4	0.749945000	172.2.242.145	172.2.255.255	NBNS	92	0.076973000	Name query NB ISATAP<0>
5	0.980445000	172.2.242.126	239.255.255.250	SSDP	175	0.230500000	M-SEARCH * HTTP/1.1
6	1.427993000	172.2.242.145	76.76.76.254	TCP	66	0.446585000	49322-80 [SYN] Seq=0 win=8192 Len=0 MSS=1460 WS=256 SACK_PERM=1
7	1.427993000	172.2.242.145	76.76.76.254	TCP	66	0.000963000	49320-80 [SYN] Seq=0 win=8192 Len=0 MSS=1460 WS=256 SACK_PERM=1
8	1.428086000	172.2.242.145	76.76.76.254	TCP	66	0.000093000	49318-80 [SYN] Seq=0 win=8192 Len=0 MSS=1460 WS=256 SACK_PERM=1
9	1.428976000	172.2.242.145	76.76.76.254	TCP	66	0.001890000	49321-80 [SYN] Seq=0 win=8192 Len=0 MSS=1460 WS=256 SACK_PERM=1
10	1.430001000	172.2.242.145	76.76.76.254	TCP	66	0.000025000	49323-80 [SYN] Seq=0 win=8192 Len=0 MSS=1460 WS=256 SACK_PERM=1
11	1.430031000	172.2.242.145	76.76.76.254	TCP	66	0.000030000	49319-80 [SYN] Seq=0 win=8192 Len=0 MSS=1460 WS=256 SACK_PERM=1
12	1.430052000	172.2.242.145	76.76.76.254	TCP	66	0.000021000	49324-80 [SYN] Seq=0 win=8192 Len=0 MSS=1460 WS=256 SACK_PERM=1
13	1.430261000	172.2.0.1	172.2.242.145	ICMP	94	0.000209000	Destination unreachable (Network unreachable)
14	1.433008000	172.2.0.1	172.2.242.145	ICMP	94	0.002747000	Destination unreachable (Network unreachable)
15	1.433009000	172.2.0.1	172.2.242.145	ICMP	94	0.000001000	Destination unreachable (Network unreachable)
16	1.500981000	fe80::59a8:8f95:a7ff:ff02::1:3	224.0.0.252	LLMNR	86	0.067972000	Standard query 0xa8d9 A isatap
17	1.501269000	172.2.242.145	224.0.0.252	LLMNR	66	0.000288000	Standard query 0xa8d9 A isatap
18	1.555066000	172.2.242.145	172.2.0.1	DNS	83	0.053797000	Standard query 0xc1a1 A 6to4.ipv6.microsoft.com
19	1.555207000	172.2.242.145	192.168.0.200	DNS	83	0.000141000	Standard query 0xc1a1 A 6to4.ipv6.microsoft.com
20	1.601165000	fe80::59a8:8f95:a7ff:ff02::1:3	224.0.0.252	LLMNR	86	0.045958000	Standard query 0xa8d9 A isatap
21	1.601326000	172.2.242.145	224.0.0.252	LLMNR	66	0.000161000	Standard query 0xa8d9 A isatap
22	1.677039000	172.2.242.145	76.76.76.254	TCP	66	0.075713000	49325-80 [SYN] Seq=0 win=8192 Len=0 MSS=1460 WS=256 SACK_PERM=1
23	1.677139000	172.2.242.145	76.76.76.254	TCP	66	0.000100000	49331-80 [SYN] Seq=0 win=8192 Len=0 MSS=1460 WS=256 SACK_PERM=1

Frame 1: 92 bytes on wire (736 bits), 92 bytes captured (736 bits) on interface 0
 Ethernet II, Src: HonHaiPr_71:0d:86 (94:39:e5:71:0d:86), Dst: Broadcast (ff:ff:ff:ff:ff:ff)
 Internet Protocol Version 4, Src: 172.2.242.145 (172.2.242.145), Dst: 172.2.255.255 (172.2.255.255)
 User Datagram Protocol, Src Port: 137 (137), Dst Port: 137 (137)
 NetBIOS Name Service

```

0000 ff ff ff ff ff ff 94 39 e5 71 0d 86 08 00 45 00 .....9.q....E.
0010 00 4e 3f 75 00 00 80 11 b0 93 ac 02 f2 91 ac 02 .N?u.....
0020 ff ff 00 89 00 89 0a a2 b6 c9 a7 01 10 00 01 .....:.....
0030 00 00 00 00 00 00 20 45 4a 46 44 45 42 46 45 45 .....E JFDEBFEE
0040 42 46 41 43 41 43 41 43 41 43 41 43 41 43 41 43 BFACACAC ACACACAC
0050 41 43 41 43 41 43 41 00 00 20 01 ACACAAA. ...
    
```

File: "E:\semester7\skripsiku qos\wireshark\c... Packets: 23873 - Displayed: 23873 (100.0%) - Load time: 0:00:627 Profile: Default

Capture delay Ip 172.2.242.126

Filter: udp && ip.dst==172.2.255.255 && ip.src==172.2.242.126

No.	Time	Source	Destination	Protocol	Length	Time delta from previous displayed frame	Info
3	0.672972000	172.2.242.126	172.2.255.255	NBNS	92	0.197555000	Name query NB PLATAD<1>
4	5.092959000	172.2.242.126	172.2.255.255	NBNS	92	0.740376000	Name query NB PLATAD<1>
47	5.888785000	172.2.242.126	172.2.255.255	NBNS	92	0.036554000	Name query NB PLATAD<1>
54	6.707022000	172.2.242.126	172.2.255.255	NBNS	92	0.002567000	Name query NB PLATAD<1>
98	11.109202000	172.2.242.126	172.2.255.255	NBNS	92	0.153780000	Name query NB PLATAD<1>
103	11.925018000	172.2.242.126	172.2.255.255	NBNS	92	0.118369000	Name query NB PLATAD<1>
105	12.638754000	172.2.242.126	172.2.255.255	NBNS	92	0.631866000	Name query NB PLATAD<1>
132	17.240970000	172.2.242.126	172.2.255.255	NBNS	92	0.131993000	Name query NB PLATAD<1>
135	17.958122000	172.2.242.126	172.2.255.255	NBNS	92	0.099326000	Name query NB PLATAD<1>
139	18.633725000	172.2.242.126	172.2.255.255	NBNS	92	0.024963000	Name query NB PLATAD<1>
154	20.002226000	172.2.242.126	172.2.255.255	NBNS	92	0.081293000	Name query NB SAUTH.AVIRA.COM<0>
160	20.718201000	172.2.242.126	172.2.255.255	NBNS	92	0.056241000	Name query NB SAUTH.AVIRA.COM<0>
170	21.434078000	172.2.242.126	172.2.255.255	NBNS	92	0.274152000	Name query NB SAUTH.AVIRA.COM<0>
189	23.172720000	172.2.242.126	172.2.255.255	NBNS	92	0.209794000	Name query NB PLATAD<1>
200	23.990897000	172.2.242.126	172.2.255.255	NBNS	92	0.140177000	Name query NB PLATAD<1>
207	24.706792000	172.2.242.126	172.2.255.255	NBNS	92	0.142582000	Name query NB PLATAD<1>
231	29.206688000	172.2.242.126	172.2.255.255	NBNS	92	0.391493000	Name query NB PLATAD<1>
240	29.935220000	172.2.242.126	172.2.255.255	NBNS	92	0.003316000	Name query NB PLATAD<1>
245	30.740827000	172.2.242.126	172.2.255.255	NBNS	92	0.124569000	Name query NB PLATAD<1>
296	35.198813000	172.2.242.126	172.2.255.255	NBNS	92	0.108207000	Name query NB PLATAD<1>
304	36.058951000	172.2.242.126	172.2.255.255	NBNS	92	0.266420000	Name query NB PLATAD<1>
308	36.774845000	172.2.242.126	172.2.255.255	NBNS	92	0.306319000	Name query NB PLATAD<1>
337	41.275652000	172.2.242.126	172.2.255.255	NBNS	92	0.345683000	Name query NB PLATAD<1>

Frame 3: 92 bytes on wire (736 bits), 92 bytes captured (736 bits) on interface 0
 Ethernet II, Src: HonHaiPr_c1:7d:e3 (c0:14:3d:c1:7d:e3), Dst: Broadcast (ff:ff:ff:ff:ff:ff)
 Internet Protocol Version 4, Src: 172.2.242.126 (172.2.242.126), Dst: 172.2.255.255 (172.2.255.255)
 User Datagram Protocol, Src Port: 137 (137), Dst Port: 137 (137)
 NetBIOS Name Service

```

0000 ff ff ff ff ff ff c0 14 3d c1 7d e3 08 00 45 00 .....=}....E.
0010 00 4e 07 f3 00 00 80 11 e8 28 ac 02 f2 7e ac 02 .N.....{.....
0020 ff ff 00 89 00 89 00 3a 9e 59 b6 17 01 10 00 01 .....:Y.....
0030 00 00 00 00 00 00 20 46 41 45 4d 45 42 46 45 45 .....F AEMEBFEE
0040 42 45 45 43 41 43 41 43 41 43 41 43 41 43 41 43 BEECACAC ACACACAC
0050 41 43 41 43 41 42 4d 00 00 20 01 ACACABM. ...
    
```

File: "E:\semester7\skripsiku qos\wireshark\c... Packets: 23873 - Displayed: 1884 (7.9%) - Load time: 0:00:682 Profile: Default

Capture delay Ip 172.2.242.147

Wireshark capture showing NetBIOS Name Service traffic. The filter is `udp && ip.dst==172.2.255.255 && ip.src==172.2.242.147`. The capture shows a series of NBNS (NetBIOS Name Service) packets from 172.2.242.147 to 172.2.255.255. The packets include registrations, releases, and name queries for various NetBIOS names like `WORKGROUP-PC<20>`, `ISATAP<00>`, and `WPAD<00>`.

No.	Time	Source	Destination	Protocol	Length	Time delta from previous displayed frame	Info
1431	172.390662	172.2.242.147	172.2.255.255	NBNS	110	0.000000000	Release NB PONOROGO-PC<20>
1432	474.907896	172.2.242.147	172.2.255.255	NBNS	110	0.001276000	Release NB WORKGROUP<00>
1433	474.909171	172.2.242.147	172.2.255.255	NBNS	110	0.001275000	Release NB PONOROGO-PC<00>
1436	475.010922	172.2.242.147	172.2.255.255	NBNS	110	0.101751000	Registration NB PONOROGO-PC<20>
1442	475.420159	172.2.242.147	172.2.255.255	NBNS	92	0.409237000	Name query NB ISATAP<00>
1443	475.622516	172.2.242.147	172.2.255.255	NBNS	110	0.202357000	Registration NB WORKGROUP<1e>
1444	475.724794	172.2.242.147	172.2.255.255	NBNS	110	0.102278000	Registration NB PONOROGO-PC<20>
1445	476.338276	172.2.242.147	172.2.255.255	NBNS	92	0.613482000	Name query NB ISATAP<00>
1447	476.440693	172.2.242.147	172.2.255.255	NBNS	110	0.102417000	Registration NB WORKGROUP<1e>
1448	476.442065	172.2.242.147	172.2.255.255	NBNS	110	0.001372000	Registration NB PONOROGO-PC<20>
1453	477.364073	172.2.242.147	172.2.255.255	NBNS	110	0.922008000	Registration NB WORKGROUP<1e>
1454	477.365352	172.2.242.147	172.2.255.255	NBNS	110	0.001279000	Registration NB PONOROGO-PC<20>
1455	477.380593	172.2.242.147	172.2.255.255	NBNS	92	0.015241000	Name query NB ISATAP<00>
1467	477.974768	172.2.242.147	172.2.255.255	NBNS	110	0.594175000	Release NB WORKGROUP<1e>
1468	477.976207	172.2.242.147	172.2.255.255	NBNS	110	0.001439000	Registration NB WORKGROUP<00>
1469	477.977636	172.2.242.147	172.2.255.255	NBNS	110	0.001429000	Registration NB PONOROGO-PC<00>
1470	477.978839	172.2.242.147	172.2.255.255	NBNS	92	0.001203000	Name query NB WPAD<00>
1471	477.981242	172.2.242.147	172.2.255.255	BROWSE*	243	0.002403000	HOST ANNOUNCEMENT PONOROGO-PC, workstation, Server, NT workstation
1472	477.982641	172.2.242.147	172.2.255.255	NBNS	92	0.001399000	Name query NB ISATAP<00>
1477	478.690851	172.2.242.147	172.2.255.255	NBNS	110	0.708210000	Registration NB PONOROGO-PC<00>
1478	478.692190	172.2.242.147	172.2.255.255	NBNS	110	0.001339000	Registration NB WORKGROUP<00>
1479	478.693394	172.2.242.147	172.2.255.255	NBNS	92	0.001204000	Name query NB WPAD<00>
1480	478.792782	172.2.242.147	172.2.255.255	NBNS	92	0.099388000	Name query NB ISATAP<00>

Frame 1431: 110 bytes on wire (880 bits), 110 bytes captured (880 bits) on interface 0
 Ethernet II, Src: Liteont_e1:d2:41 (9c:b7:0d:a1:d2:41), Dst: Broadcast (ff:ff:ff:ff:ff:ff)
 Internet Protocol Version 4, Src: 172.2.242.147 (172.2.242.147), Dst: 172.2.255.255 (172.2.255.255)
 User Datagram Protocol, Src Port: 137 (137), Dst Port: 137 (137)
 NetBIOS Name Service

```

0000 ff ff ff ff ff ff 9c b7 0d a1 d2 41 08 00 45 00 .....A.E.
0010 00 60 23 a0 00 00 80 11 cc 54 ac 02 f2 93 ac 02 ..#....T.....
0020 ff ff 00 89 00 89 06 4c a8 aa e4 b7 30 10 00 01 .....L....Q...
0030 00 00 00 00 00 01 20 46 41 45 50 45 4f 45 50 46 .....F AEPEOPFF
0040 43 45 50 45 48 45 50 43 4e 46 41 45 44 43 41 43 ..CEPEHEPC NFAEDCAC
0050 41 43 41 43 41 41 00 20 00 01 c0 0c 00 20 ..ACACACA.....
    
```

Capture delay Ip 172.2.242.113

Wireshark capture showing NetBIOS Name Service traffic. The filter is `udp && ip.dst==172.2.255.255 && ip.src==172.2.242.113`. The capture shows a series of NBNS (NetBIOS Name Service) packets from 172.2.242.113 to 172.2.255.255. The packets include registrations, releases, and name queries for various NetBIOS names like `ACER-PC<00>`, `WORKGROUP<00>`, `ISATAP<00>`, and `WPAD<00>`.

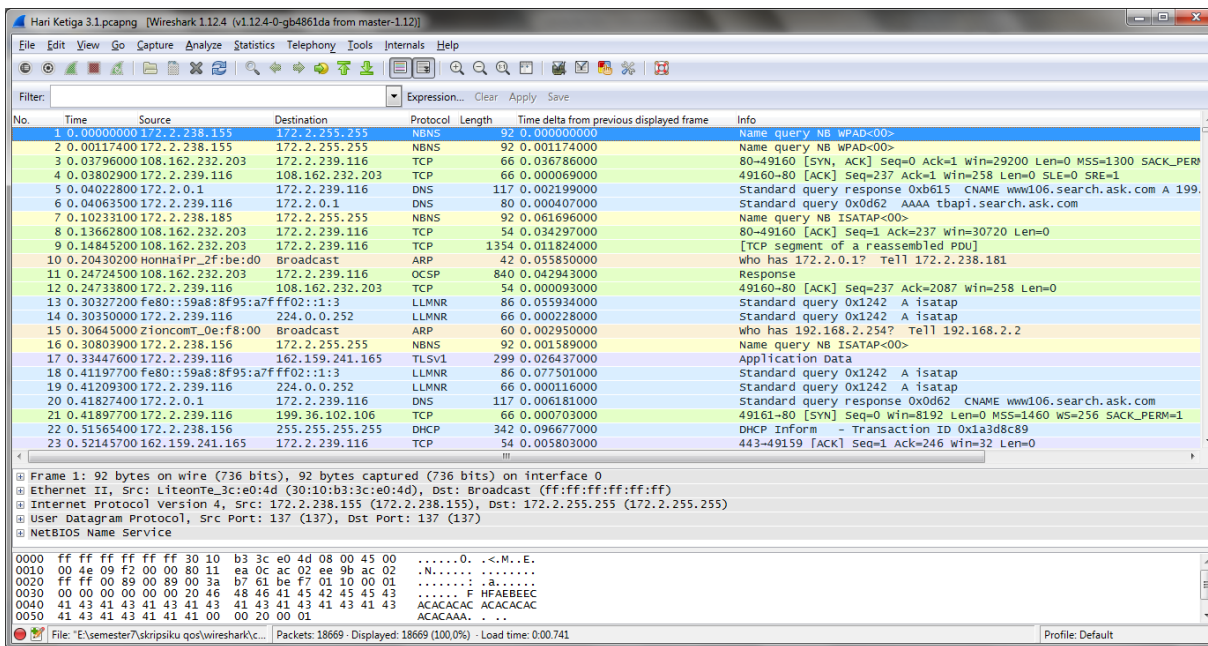
No.	Time	Source	Destination	Protocol	Length	Time delta from previous displayed frame	Info
5148	1088.34296	172.2.242.113	172.2.255.255	NBNS	110	0.000000000	Registration NB ACER-PC<00>
5149	1088.34427	172.2.242.113	172.2.255.255	NBNS	110	0.001309000	Registration NB WORKGROUP<00>
5150	1088.34560	172.2.242.113	172.2.255.255	NBNS	110	0.001323000	Registration NB ACER-PC<20>
5160	1089.14995	172.2.242.113	172.2.255.255	NBNS	110	0.804352000	Registration NB ACER-PC<20>
5161	1089.15137	172.2.242.113	172.2.255.255	NBNS	110	0.001423000	Registration NB WORKGROUP<00>
5162	1089.15280	172.2.242.113	172.2.255.255	NBNS	110	0.001426000	Registration NB ACER-PC<00>
5174	1089.86743	172.2.242.113	172.2.255.255	NBNS	110	0.714634000	Registration NB ACER-PC<00>
5175	1089.86880	172.2.242.113	172.2.255.255	NBNS	110	0.001367000	Registration NB WORKGROUP<00>
5176	1089.87006	172.2.242.113	172.2.255.255	NBNS	110	0.001262000	Registration NB ACER-PC<20>
5185	1090.58286	172.2.242.113	172.2.255.255	NBNS	110	0.712798000	Registration NB ACER-PC<20>
5186	1090.58419	172.2.242.113	172.2.255.255	NBNS	110	0.001335000	Registration NB WORKGROUP<00>
5187	1090.58551	172.2.242.113	172.2.255.255	NBNS	110	0.001320000	Registration NB ACER-PC<00>
5196	1091.39989	172.2.242.113	172.2.255.255	NBNS	110	0.814380000	Registration NB WORKGROUP<1e>
5207	1091.81010	172.2.242.113	172.2.255.255	NBNS	92	0.410204000	Name query NB WPAD<00>
5210	1092.11585	172.2.242.113	172.2.255.255	NBNS	110	0.305757000	Registration NB WORKGROUP<1e>
5216	1092.62709	172.2.242.113	172.2.255.255	NBNS	92	0.511235000	Name query NB WPAD<00>
5222	1093.34295	172.2.242.113	172.2.255.255	NBNS	92	0.715862000	Name query NB WPAD<00>
5225	1093.64995	172.2.242.113	172.2.255.255	NBNS	110	0.307000000	Registration NB WORKGROUP<1e>
5230	1094.36668	172.2.242.113	172.2.255.255	BROWSE*	220	0.716726000	Request Announcement ACER-PC
5231	1094.36902	172.2.242.113	172.2.255.255	BROWSE*	243	0.002341000	Host Announcement ACER-PC, workstation, Server, NT workstation, P
5343	1109.50180	172.2.242.113	172.2.255.255	NBNS	92	15.132777000	Name query NB API.CRITNV.COM<00>
5354	1110.32008	172.2.242.113	172.2.255.255	NBNS	92	0.818280000	Name query NB API.CRITNV.COM<00>
5364	1111.03593	172.2.242.113	172.2.255.255	NBNS	92	0.715852000	Name query NB API.CRITNV.COM<00>

Frame 5148: 110 bytes on wire (880 bits), 110 bytes captured (880 bits) on interface 0
 Ethernet II, Src: Liteont_e4:e7:90 (20:16:d8:e4:e7:90), Dst: Broadcast (ff:ff:ff:ff:ff:ff)
 Internet Protocol Version 4, Src: 172.2.242.113 (172.2.242.113), Dst: 172.2.255.255 (172.2.255.255)
 User Datagram Protocol, Src Port: 137 (137), Dst Port: 137 (137)
 NetBIOS Name Service

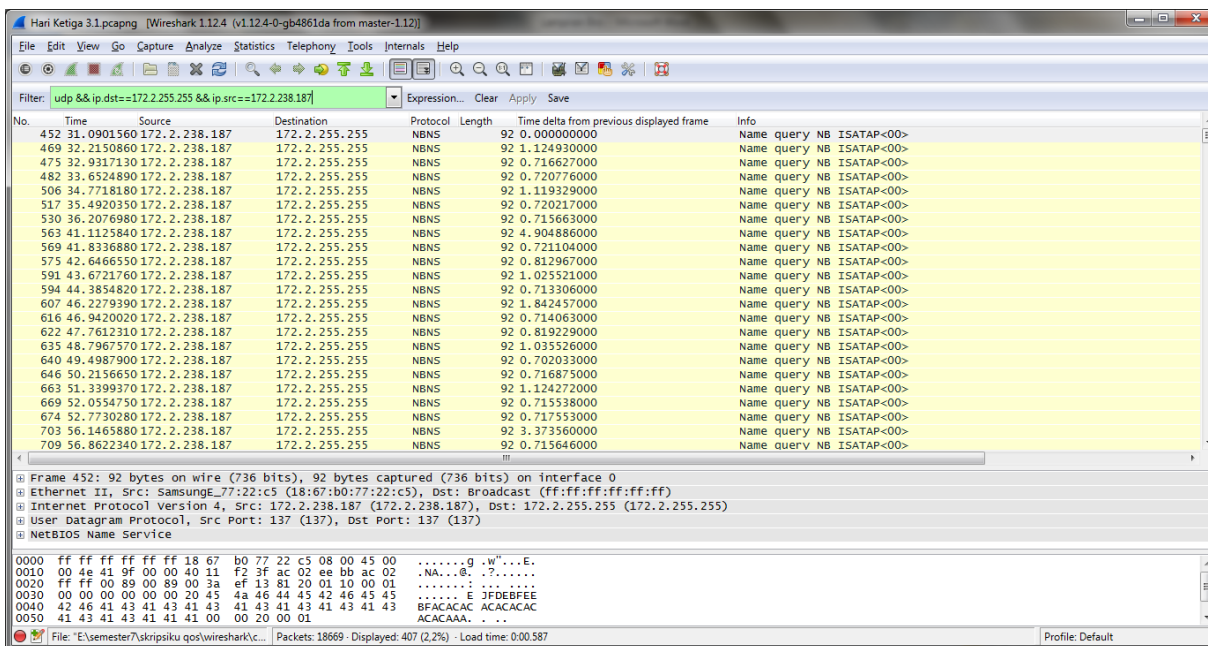
```

0000 ff ff ff ff ff ff 20 16 d8 e4 e7 90 08 00 45 00 .....E.
0010 00 60 00 fe 00 00 80 11 ef 18 ac 02 f2 71 ac 02 ..#....Q...
0020 ff ff 00 89 00 89 00 4c 6d ec da e0 29 10 00 01 .....m...).
0030 00 00 00 00 00 01 20 45 42 45 44 45 46 46 43 43 .....E BEDEFFCC
0040 4e 46 41 45 44 43 41 43 41 43 41 43 41 43 41 43 ..NFAEDCAC ACACACAC
0050 41 43 41 43 41 41 00 20 00 01 c0 0c 00 20 ..ACACAAA.....
    
```

Capture Delay di Ap 405



Capture delay Ip 172.2.238.187



Capture delay Ip 172.2.238.189

Filter: `udp && ip.dst==172.2.255.255 && ip.src==172.2.238.189`

No.	Time	Source	Destination	Protocol	Length	Time delta from previous displayed frame	Info
3113	4.37	618982	172.2.238.189	NBNS	92	0.000000000	Name query NB WPAD<00>
3118	4.38	341575	172.2.238.189	NBNS	92	0.722593000	Name query NB WPAD<00>
3122	4.39	153467	172.2.238.189	NBNS	92	0.811892000	Name query NB WPAD<00>
6676	94.3	551452	172.2.238.189	NBNS	92	504.397985000	Name query NB ISATAP<00>
6679	94.4	374797	172.2.238.189	NBNS	92	0.823345000	Name query NB ISATAP<00>
6682	94.4	680966	172.2.238.189	NBNS	92	0.306169000	Name query NB ISATAP<00>
7601	1040	09458	172.2.238.189	NBNS	92	95.413614000	Name query NB WPAD<00>
7604	1040	70825	172.2.238.189	NBNS	92	0.613672000	Name query NB WPAD<00>
7609	1041	52730	172.2.238.189	NBNS	92	0.819055000	Name query NB WPAD<00>
12611	1642	16032	172.2.238.189	NBNS	92	600.633017000	Name query NB WPAD<00>
12618	1642	97849	172.2.238.189	NBNS	92	0.818175000	Name query NB WPAD<00>
12630	1643	69635	172.2.238.189	NBNS	92	0.717855000	Name query NB WPAD<00>
15835	2244	43206	172.2.238.189	NBNS	92	600.735706000	Name query NB WPAD<00>
15848	2246	50903	172.2.238.189	NBNS	92	2.076971000	Name query NB WPAD<00>
18102	2799	45501	172.2.238.189	NBNS	92	552.945980000	Name query NB WINS<1c>
18103	2800	17193	172.2.238.189	NBNS	92	0.716925000	Name query NB WINS<1c>
18105	2800	88684	172.2.238.189	NBNS	92	0.714905000	Name query NB WINS<1c>
18203	2846	70391	172.2.238.189	NBNS	92	45.817077000	Name query NB WPAD<00>
18211	2847	42128	172.2.238.189	NBNS	92	0.717363000	Name query NB WPAD<00>

Frame 3113: 92 bytes on wire (736 bits), 92 bytes captured (736 bits) on interface 0
 Ethernet II, Src: HonhaiPr_76:6a:a5 (68:94:23:76:6a:a5), Dst: Broadcast (ff:ff:ff:ff:ff:ff)
 Internet Protocol Version 4, Src: 172.2.238.189 (172.2.238.189), Dst: 172.2.255.255 (172.2.255.255)
 User Datagram Protocol, Src Port: 137 (137), Dst Port: 137 (137)
 NetBIOS Name Service

```

0000 ff ff ff ff ff ff 68 94 23 76 6a a5 08 00 45 00 .....h.#vJ...E.
0010 00 4e id d5 00 00 80 11 d6 07 ac 02 ee bd ac 02 .....N.....
0020 ff ff 00 89 00 89 00 3a 9d 7b d8 bb 01 10 00 01 .....:f.....
0030 00 00 00 00 00 00 20 46 48 46 41 45 42 45 45 43 .....FHFABEEEC
0040 41 43 41 43 41 43 41 43 41 43 41 43 41 43 41 43 ACACACAC ACACACAC
0050 41 43 41 43 41 41 00 00 20 00 01 ACACAAA. ....
    
```

Capture delay Ip 172.2.239.111

Filter: `udp && ip.dst==172.2.255.255 && ip.src==172.2.239.111`

No.	Time	Source	Destination	Protocol	Length	Time delta from previous displayed frame	Info
779	62.2923820	172.2.239.111	172.2.255.255	NBNS	110	0.000000000	Registration NB ITCENTRUM<00>
780	62.2948330	172.2.239.111	172.2.255.255	NBNS	110	0.002451000	Registration NB WORKGROUP<00>
798	63.1007820	172.2.239.111	172.2.255.255	NBNS	110	0.805949000	Registration NB WORKGROUP<00>
799	63.1020610	172.2.239.111	172.2.255.255	NBNS	110	0.001279000	Registration NB ITCENTRUM<00>
809	63.8202360	172.2.239.111	172.2.255.255	NBNS	110	0.718195000	Registration NB ITCENTRUM<00>
814	64.6348910	172.2.239.111	172.2.255.255	NBNS	110	0.814635000	Registration NB WORKGROUP<00>
815	64.6363310	172.2.239.111	172.2.255.255	NBNS	110	0.001440000	Registration NB ITCENTRUM<00>
828	65.0455400	172.2.239.111	172.2.255.255	NBNS	92	0.409209000	Name query NB WPAD<00>
839	65.7619210	172.2.239.111	172.2.255.255	NBNS	92	0.716381000	Name query NB WPAD<00>
850	66.5814700	172.2.239.111	172.2.255.255	NBNS	92	0.819549000	Name query NB WPAD<00>
1016	96.7477840	172.2.239.111	172.2.255.255	NBNS	110	30.166314000	Registration NB ITCENTRUM<20>
1059	97.4644640	172.2.239.111	172.2.255.255	NBNS	92	0.716680000	Name query NB WPAD<00>
1060	97.4636580	172.2.239.111	172.2.255.255	NBNS	92	0.001194000	Name query NB WPAD<00>
1061	97.4669180	172.2.239.111	172.2.255.255	NBNS	92	0.001260000	Name query NB WPAD<00>
1062	97.4692620	172.2.239.111	172.2.255.255	NBNS	92	0.002344000	Name query NB WPAD<00>
1063	97.5664730	172.2.239.111	172.2.255.255	NBNS	110	0.097211000	Registration NB ITCENTRUM<20>
1068	98.2818690	172.2.239.111	172.2.255.255	NBNS	92	0.715396000	Name query NB WPAD<00>
1069	98.2842010	172.2.239.111	172.2.255.255	NBNS	92	0.002332000	Name query NB WPAD<00>
1070	98.2855500	172.2.239.111	172.2.255.255	NBNS	92	0.001349000	Name query NB WPAD<00>
1071	98.3839730	172.2.239.111	172.2.255.255	NBNS	92	0.098423000	Name query NB WPAD<00>
1072	98.3868680	172.2.239.111	172.2.255.255	NBNS	110	0.002895000	Registration NB ITCENTRUM<20>
1078	99.0998460	172.2.239.111	172.2.255.255	NBNS	92	0.712978000	Name query NB WPAD<00>
1079	99.1010110	172.2.239.111	172.2.255.255	NBNS	92	0.001165000	Name query NB WPAD<00>

Frame 779: 110 bytes on wire (880 bits), 110 bytes captured (880 bits) on interface 0
 Ethernet II, Src: IntelCor_35:fb:50 (00:23:14:35:fb:50), Dst: Broadcast (ff:ff:ff:ff:ff:ff)
 Internet Protocol Version 4, Src: 172.2.239.111 (172.2.239.111), Dst: 172.2.255.255 (172.2.255.255)
 User Datagram Protocol, Src Port: 137 (137), Dst Port: 137 (137)
 NetBIOS Name Service

```

0000 ff ff ff ff ff ff 00 23 14 35 fb 50 08 00 45 00 .....#.S.P..E.
0010 00 60 00 06 00 00 80 11 f3 12 ac 02 6f ac 02 .....o.....
0020 ff ff 00 89 00 89 00 4c 2d 06 a1 c2 29 10 00 01 .....L.....
0030 00 00 00 00 00 01 20 45 4a 46 45 45 44 45 46 45 .....EJFEEDFE
0040 4f 46 45 46 43 46 46 45 4e 43 41 43 41 43 41 43 OFEFCFFE NCACACAC
0050 41 43 41 43 41 41 00 00 20 00 01 c0 0c 00 20 ACACAAA. ....
    
```


Capture Delay di Ap 403

The screenshot shows a Wireshark capture of network traffic. The packet list pane displays various protocols including NBNS, LLMNR, DHCPv6, and ARP. Frame 92 is highlighted in yellow, indicating a significant delay. The packet details pane shows a NetBIOS Name Service query for 'www.google.com'. The packet bytes pane shows the raw hex and ASCII data of the frame.

No.	Time	Source	Destination	Protocol	Length	Time delta from previous displayed frame	Info
1	0.00000000	172.4.0.70	172.4.255.255	NBNS	92	0.000000000	Name query NB www.google.com<00>
2	0.06197100	fe80::59a8:8f95:a7ff02::1:13	224.0.0.252	LLMNR	86	0.061971000	Standard query 0x7dbb A isatap
3	0.06229300	169.254.64.147	224.0.0.252	LLMNR	66	0.000322000	Standard query 0x7dbb A isatap
4	0.17056600	fe80::59a8:8f95:a7ff02::1:13	224.0.0.252	LLMNR	86	0.108273000	Standard query 0x7dbb A isatap
5	0.17072000	169.254.64.147	224.0.0.252	LLMNR	66	0.000154000	Standard query 0x7dbb A isatap
6	0.20628800	172.4.0.4	172.4.255.255	NBNS	92	0.035568000	Name query NB ISATAP<00>
7	0.37377100	169.254.64.147	169.254.255.255	NBNS	92	0.167483000	Name query NB ISATAP<00>
8	0.51378700	fe80::59a8:8f95:a7ff02::1:2	224.0.0.252	DHCPv6	151	0.140016000	Solicit xID: 0xid62f CID: 00010001c1d960be89a8fbc3135
9	0.61367300	172.4.0.6	172.4.255.255	NBNS	92	0.099866000	Name query NB WPAD<00>
10	0.71803900	172.4.0.32	255.255.255.255	DB-LSP	146	0.104366000	Dropbox LAN sync Discovery Protocol
11	0.71960200	172.4.0.32	255.255.255.255	DB-LSP	146	0.001563000	Dropbox LAN sync Discovery Protocol
12	1.02270300	fe80::dc1:27dd:a84c:ff02::1:3	224.0.0.252	LLMNR	86	0.303101000	Standard query 0xb490 A isatap
13	1.02362900	172.4.0.4	224.0.0.252	LLMNR	66	0.000926000	Standard query 0xb490 A isatap
14	1.02437100	SamsungE_af:59a	Broadcast	ARP	42	0.000742000	who has 172.4.0.4? Tell 172.4.0.51
15	1.12668900	172.4.0.4	224.0.0.252	LLMNR	66	0.102318000	Standard query 0xb490 A isatap
16	1.13768900	169.254.64.147	169.254.255.255	NBNS	92	0.011000000	Name query NB ISATAP<00>
17	1.29736400	Routerbo_c4:14:81	HonHaiPr_71:0d:86	IPv4	14	0.159675000	[Malformed Packet]
18	1.47092900	fe80::59a8:8f95:a7ff02::1:3	224.0.0.252	LLMNR	84	0.173564000	Standard query 0x7800 A wpad
19	1.47134800	169.254.64.147	224.0.0.252	LLMNR	64	0.000420000	Standard query 0x7800 A wpad
20	1.57530800	fe80::59a8:8f95:a7ff02::1:3	224.0.0.252	LLMNR	84	0.103960000	Standard query 0x7800 A wpad
21	1.57549000	169.254.64.147	224.0.0.252	LLMNR	64	0.000182000	Standard query 0x7800 A wpad
22	1.74218500	172.4.0.29	224.0.0.252	LLMNR	66	0.166695000	Standard query 0x49b0 A isatap
23	1.77780500	169.254.64.147	169.254.255.255	NBNS	92	0.035620000	Name query NB WPAD<00>

Frame 92: 92 bytes on wire (736 bits), 92 bytes captured (736 bits) on interface 0
 Ethernet II, Src: HonHaiPr_97:d3:c1 (e0:06:e6:97:38:7d), Dst: Broadcast (ff:ff:ff:ff:ff:ff)
 Internet Protocol Version 4, Src: 172.4.0.70 (172.4.0.70), Dst: 172.4.255.255 (172.4.255.255)
 User Datagram Protocol, Src Port: 137 (137), Dst Port: 137 (137)
 NetBIOS Name Service

```

0000 ff ff ff ff ff ff e0 06 e6 97 38 7d 08 00 45 00 .....8}..E.
0010 00 4e 2e 3e 00 00 80 11 b4 12 ac 04 00 06 ac 04 .....N.>....F...
0020 ff ff 00 89 00 89 00 3a 57 38 8c 61 01 10 00 01 .....y.F...
0030 00 00 00 00 00 00 20 46 48 4e 48 46 48 43 4f 45 .....F HFFHFCODE
0040 48 45 50 45 50 45 48 45 4d 45 46 43 4f 45 44 45 HEPEPEHE MEFCODE
0050 50 45 4e 43 41 41 00 00 20 00 01 .....PENCAAA...
    
```

Capture delay Ip 172.4.0.47

The screenshot shows a Wireshark capture of network traffic. The packet list pane displays various protocols including NBNS. Frame 93 is highlighted in yellow, indicating a significant delay. The packet details pane shows a NetBIOS Name Service query for 'www.google.com'. The packet bytes pane shows the raw hex and ASCII data of the frame.

No.	Time	Source	Destination	Protocol	Length	Time delta from previous displayed frame	Info
93	11.76512500	172.4.0.47	172.4.255.255	NBNS	92	0.000000000	Name query NB WPAD<00>
323	88.16601100	172.4.0.47	172.4.255.255	NBNS	92	76.400886000	Name query NB WPAD<00>
435	125.99840600	172.4.0.47	172.4.255.255	NBNS	92	37.832395000	Name query NB WPAD<00>
800	165.37176100	172.4.0.47	172.4.255.255	NBNS	92	39.373355000	Name query NB WPAD<00>
809	166.09539300	172.4.0.47	172.4.255.255	NBNS	92	0.723632000	Name query NB WPAD<00>
1083	203.21193700	172.4.0.47	172.4.255.255	NBNS	92	37.116544000	Name query NB WPAD<00>
1087	203.92784300	172.4.0.47	172.4.255.255	NBNS	92	0.715906000	Name query NB WPAD<00>
1625	320.41525700	172.4.0.47	172.4.255.255	NBNS	92	116.487414000	Name query NB WPAD<00>
1826	357.43620600	172.4.0.47	172.4.255.255	NBNS	92	37.020949000	Name query NB WPAD<00>
1839	358.97073600	172.4.0.47	172.4.255.255	NBNS	92	1.534530000	Name query NB WPAD<00>
2102	396.09456900	172.4.0.47	172.4.255.255	NBNS	92	37.123833000	Name query NB WPAD<00>
2121	397.52631700	172.4.0.47	172.4.255.255	NBNS	92	1.431748000	Name query NB WPAD<00>
2341	434.65046800	172.4.0.47	172.4.255.255	NBNS	92	37.124151000	Name query NB WPAD<00>
2408	445.38897200	172.4.0.47	172.4.255.255	NBNS	92	10.738504000	Name query NB WPAD<00>
2413	446.10841700	172.4.0.47	172.4.255.255	NBNS	92	0.719445000	Name query NB WPAD<00>
2417	446.82075700	172.4.0.47	172.4.255.255	NBNS	92	0.712340000	Name query NB WPAD<00>
2513	459.91251700	172.4.0.47	172.4.255.255	NBNS	92	13.091760000	Name query NB WPAD<00>
2517	460.72956600	172.4.0.47	172.4.255.255	NBNS	92	0.817049000	Name query NB WPAD<00>
2519	461.44548000	172.4.0.47	172.4.255.255	NBNS	92	0.715914000	Name query NB WPAD<00>
2554	473.92248800	172.4.0.47	172.4.255.255	NBNS	92	12.477008000	Name query NB WPAD<00>
2758	512.48027300	172.4.0.47	172.4.255.255	NBNS	92	38.557785000	Name query NB WPAD<00>
2761	513.29843400	172.4.0.47	172.4.255.255	NBNS	92	0.818161000	Name query NB WPAD<00>
2927	561.05871900	172.4.0.47	172.4.255.255	NBNS	92	47.760285000	Name query NB WPAD<00>

Frame 93: 92 bytes on wire (736 bits), 92 bytes captured (736 bits) on interface 0
 Ethernet II, Src: HonHaiPr_97:d3:c1 (c0:f8:da:97:d3:c1), Dst: Broadcast (ff:ff:ff:ff:ff:ff)
 Internet Protocol Version 4, Src: 172.4.0.47 (172.4.0.47), Dst: 172.4.255.255 (172.4.255.255)
 User Datagram Protocol, Src Port: 137 (137), Dst Port: 137 (137)
 NetBIOS Name Service

```

0000 ff ff ff ff ff ff c0 f8 da 97 d3 c1 08 00 45 00 .....E.
0010 00 4e 17 37 00 00 80 11 cb 30 ac 00 2f ac 04 .....N.7....0.../...
0020 ff ff 00 89 00 89 00 3a 79 7b eb 46 01 10 00 01 .....y.F...
0030 00 00 00 00 00 00 20 46 48 4e 41 45 42 45 45 43 .....F HFAEBEEC
0040 41 43 41 43 41 43 41 43 41 43 41 43 41 43 41 43 ACACACAC ACACACAC
0050 41 43 41 43 41 41 00 00 20 00 01 .....ACACAAA...
    
```

Capture delay Ip 172.4.0.52

Filter: `udp && ip.dst==172.4.255.255 && ip.src==172.4.0.52`

No.	Time	Source	Destination	Protocol	Length	Time delta from previous displayed frame	Info
109	172.4.255.255	172.4.0.52	172.4.255.255	NBNS	92	0.000000000	Name query NB WPAD<00>
118	17.1832650	172.4.0.52	172.4.255.255	NBNS	92	4.396399000	Name query NB YAHOO.COM<00>
187	36.4084000	172.4.0.52	172.4.255.255	NBNS	92	19.225135000	Name query NB ATOMICTRIVIA.RU<00>
192	37.1243160	172.4.0.52	172.4.255.255	NBNS	92	0.715916000	Name query NB ATOMICTRIVIA.RU<00>
294	78.6461440	172.4.0.52	172.4.255.255	NBNS	92	41.521828000	Name query NB MICROSOFT.COM<00>
298	80.0785830	172.4.0.52	172.4.255.255	NBNS	92	1.432439000	Name query NB MICROSOFT.COM<00>
408	117.103554	172.4.0.52	172.4.255.255	NBNS	92	37.024971000	Name query NB GOOGLE.COM<00>
499	136.429158	172.4.0.52	172.4.255.255	NBNS	92	19.325604000	Name query NB YAHOO.COM<00>
715	155.656029	172.4.0.52	172.4.255.255	NBNS	92	19.226871000	Name query NB ATOMICTRIVIA.RU<00>
722	156.371946	172.4.0.52	172.4.255.255	NBNS	92	0.715917000	Name query NB ATOMICTRIVIA.RU<00>
734	157.190109	172.4.0.52	172.4.255.255	NBNS	92	0.818163000	Name query NB ATOMICTRIVIA.RU<00>
882	174.886038	172.4.0.52	172.4.255.255	NBNS	92	17.695929000	Name query NB DIFFERENTIA.RU<00>
892	175.701119	172.4.0.52	172.4.255.255	NBNS	92	0.815081000	Name query NB DIFFERENTIA.RU<00>
896	176.419824	172.4.0.52	172.4.255.255	NBNS	92	0.718705000	Name query NB DIFFERENTIA.RU<00>
1065	200.145444	172.4.0.52	172.4.255.255	NBNS	92	23.725620000	Name query NB MICROSOFT.COM<00>
1153	217.840555	172.4.0.52	172.4.255.255	NBNS	92	17.695111000	Name query NB BING.COM<00>
1215	237.883466	172.4.0.52	172.4.255.255	NBNS	92	20.042911000	Name query NB GOOGLE.COM<00>
1338	275.621869	172.4.0.52	172.4.255.255	NBNS	92	37.738403000	Name query NB ATOMICTRIVIA.RU<00>
1489	294.948775	172.4.0.52	172.4.255.255	NBNS	92	19.326906000	Name query NB DIFFERENTIA.RU<00>
1618	319.391506	172.4.0.52	172.4.255.255	NBNS	92	24.442731000	Name query NB MICROSOFT.COM<00>
1703	332.382229	172.4.0.52	172.4.255.255	BROWSE	243	12.990723000	Host Announcement TOM-PC, workstation, Server, NT Workstation, Po
1748	338.618331	172.4.0.52	172.4.255.255	NBNS	92	6.236102000	Name query NB BING.COM<00>
1822	357.129442	172.4.0.52	172.4.255.255	NBNS	92	18.511111000	Name query NB GOOGLE.COM<00>

Frame 109: 92 bytes on wire (736 bits), 92 bytes captured (736 bits) on interface 0
 Ethernet II, Src: Liteont_e_f3:9e:e9 (74:e5:43:f3:9e:e9), Dst: Broadcast (ff:ff:ff:ff:ff:ff)
 Internet Protocol Version 4, Src: 172.4.0.52 (172.4.0.52), Dst: 172.4.255.255 (172.4.255.255)
 User Datagram Protocol, Src Port: 137 (137), Dst Port: 137 (137)
 NetBIOS Name Service

```

0000 ff ff ff ff ff ff 74 e5 43 f3 9e e9 08 00 45 00 .....t.c.e.....E.
0010 00 4e 10 9c 00 00 40 11 11 c7 ac 04 00 34 ac 04 ...N...@.....4.
0020 ff ff 00 89 00 89 0a c5 ab 9f 11 01 10 00 01 .....:.....:
0030 00 00 00 00 00 20 46 48 46 41 45 42 45 45 43 .....:FHFABEEEC
0040 41 43 41 43 41 43 41 43 41 43 41 43 41 43 41 43 ACACACAC ACACACAC .....:FHFABEEEC
0050 41 43 41 43 41 41 00 20 00 01 ACACAAA. ....
  
```

Capture delay Ip 172.4.0.101

Filter: `udp && ip.dst==172.4.255.255 && ip.src==172.4.0.101`

No.	Time	Source	Destination	Protocol	Length	Time delta from previous displayed frame	Info
28	2.14871300	172.4.0.86	172.4.255.255	UDP	212	0.000000000	Source port: 58058 Destination port: 6646
1109	210.575401	172.4.0.86	172.4.255.255	NBNS	92	208.426688000	Name query NB ISATAP<00>
1158	220.086594	172.4.0.86	172.4.255.255	NBNS	92	9.511193000	Name query NB ISATAP<00>
1160	220.700235	172.4.0.86	172.4.255.255	NBNS	92	0.613641000	Name query NB ISATAP<00>
1163	221.518390	172.4.0.86	172.4.255.255	NBNS	92	0.818155000	Name query NB ISATAP<00>
1239	246.373061	172.4.0.86	172.4.255.255	UDP	212	24.854671000	Source port: 57400 Destination port: 6646
1795	352.015810	172.4.0.86	172.4.255.255	NBNS	92	105.642749000	Name query NB ISATAP<00>
1804	353.549935	172.4.0.86	172.4.255.255	NBNS	92	1.534125000	Name query NB ISATAP<00>
1872	368.175536	172.4.0.86	172.4.255.255	UDP	212	14.625601000	Source port: 61091 Destination port: 6646
2303	430.970456	172.4.0.86	172.4.255.255	NBNS	92	62.794920000	Name query NB WPAD<00>
2312	431.684717	172.4.0.86	172.4.255.255	NBNS	92	0.714261000	Name query NB WPAD<00>
2318	432.400600	172.4.0.86	172.4.255.255	NBNS	92	0.715883000	Name query NB WPAD<00>
2984	572.819899	172.4.0.86	172.4.255.255	NBNS	92	140.419299000	Name query NB ISATAP<00>
3041	583.046939	172.4.0.86	172.4.255.255	NBNS	92	10.227040000	Name query NB ISATAP<00>
3050	584.581050	172.4.0.86	172.4.255.255	NBNS	92	1.534111000	Name query NB ISATAP<00>
3382	649.011544	172.4.0.86	172.4.255.255	NBNS	92	64.430494000	Name query NB ISATAP<00>
3389	649.829667	172.4.0.86	172.4.255.255	NBNS	92	0.818123000	Name query NB ISATAP<00>
3390	650.443359	172.4.0.86	172.4.255.255	NBNS	92	0.613692000	Name query NB ISATAP<00>
3619	693.091970	172.4.0.86	172.4.255.255	NBNS	92	42.648611000	Name query NB ISATAP<00>
3629	693.705881	172.4.0.86	172.4.255.255	NBNS	92	0.613911000	Name query NB ISATAP<00>
3679	703.932088	172.4.0.86	172.4.255.255	NBNS	92	10.226207000	Name query NB ISATAP<00>
3688	704.749319	172.4.0.86	172.4.255.255	NBNS	92	0.817231000	Name query NB ISATAP<00>
3691	705.466018	172.4.0.86	172.4.255.255	NBNS	92	0.716699000	Name query NB ISATAP<00>

Frame 28: 212 bytes on wire (1696 bits), 212 bytes captured (1696 bits) on interface 0
 Ethernet II, Src: Liteont_cd:9b:0b (30:10:b3:cd:9b:0b), Dst: Broadcast (ff:ff:ff:ff:ff:ff)
 Internet Protocol Version 4, Src: 172.4.0.86 (172.4.0.86), Dst: 172.4.255.255 (172.4.255.255)
 User Datagram Protocol, Src Port: 58058 (58058), Dst Port: 6646 (6646)
 Data (170 bytes)

```

0000 ff ff ff ff ff ff 30 10 b3 cd 9b 0b 08 00 45 00 .....0.....E.
0010 00 c6 76 ac 00 00 80 11 6b 1c ac 04 56 ac 04 ...V...K...V...
0020 ff ff e2 ca 19 f6 00 b2 8d 94 00 00 00 a6 00 00 .....:.....M.
0030 00 06 00 00 00 00 00 00 08 00 00 00 18 4d 00 .....:.....M.
0040 63 00 4e 00 41 00 55 00 6e 00 69 00 71 00 75 00 c.N.A.U.n.i.q.u.
0050 65 00 49 00 64 00 0b 00 00 24 00 00 00 63 61 e.i.d...S...G
  
```

Capture Delay di Ap 401

Filter: `udp && ip.dst==172.2.238.117`

No.	Time	Source	Destination	Protocol	Length	Time delta from previous displayed frame	Info
1	0.000000000	172.2.238.117	192.168.0.200	DNS	76	0.000000000	Standard query 0xbe71 A www.msftncsi.com
2	0.000096000	172.2.238.117	172.2.0.1	DNS	76	0.000096000	Standard query 0xbe71 A www.msftncsi.com
3	0.000143000	172.2.238.117	192.168.0.200	DNS	76	0.000047000	Standard query 0xec99 A www.msftncsi.com
4	0.000198000	172.2.238.117	172.2.0.1	DNS	76	0.000055000	Standard query 0xec99 A www.msftncsi.com
5	0.268475000	fe80::24bc:6d9:b5c7:ff02::1:3	224.0.0.252	LLMNR	86	0.268277000	Standard query 0xb462 A isatap
6	0.269413000	172.2.238.53	224.0.0.252	LLMNR	66	0.000938000	Standard query 0xb462 A isatap
7	0.468046000	172.2.238.117	172.2.255.255	NBNS	92	0.198633000	Name query NB ISATAP<00>
8	0.499289000	172.2.238.117	172.2.0.1	DNS	85	0.031243000	Standard query 0x06c9 A teredo.ipv6.microsoft.com
9	0.499373000	172.2.238.117	192.168.0.200	DNS	85	0.000084000	Standard query 0x06c9 A teredo.ipv6.microsoft.com
10	0.577699000	172.2.238.50	172.2.255.255	NBNS	92	0.078286000	Name query NB GEO.YAHOO.COM<00>
11	0.580178000	172.2.238.43	172.2.255.255	NBNS	92	0.002519000	Name query NB PRIYA-PC<1c>
12	0.677580000	172.2.238.53	172.2.255.255	NBNS	92	0.097420000	Name query NB ISATAP<00>
13	1.232434000	172.2.238.117	172.2.255.255	NBNS	92	0.554854000	Name query NB ISATAP<00>
14	1.380268000	172.2.0.1	172.2.238.117	DNS	77	0.147834000	Standard query response 0xdac8 Server failure
15	1.400870000	172.2.238.53	172.2.255.255	NBNS	92	0.020662000	Name query NB ISATAP<00>
16	1.402071000	172.2.238.43	172.2.255.255	NBNS	92	0.001201000	Name query NB PRIYA-PC<1c>
17	1.513244000	172.2.238.117	192.168.0.200	DNS	85	0.111173000	Standard query 0x06c9 A teredo.ipv6.microsoft.com
18	1.513369000	172.2.238.117	172.2.0.1	DNS	85	0.000122000	Standard query 0x06c9 A teredo.ipv6.microsoft.com
19	1.998016000	fe80::59a8:8f95:a7ff:ff02::1:3	224.0.0.252	LLMNR	86	0.484650000	Standard query 0xadbe A isatap
20	1.998376000	172.2.238.117	224.0.0.252	LLMNR	66	0.000360000	Standard query 0xadbe A isatap
21	2.012431000	172.2.238.117	172.2.0.1	DNS	76	0.014055000	Standard query 0xec99 A www.msftncsi.com
22	2.012515000	172.2.238.117	192.168.0.200	DNS	76	0.000084000	Standard query 0xec99 A www.msftncsi.com
23	2.012581000	172.2.238.117	172.2.0.1	DNS	76	0.000066000	Standard query 0xbe71 A www.msftncsi.com

Frame 1: 76 bytes on wire (608 bits), 76 bytes captured (608 bits) on interface 0
 Ethernet II, Src: HonHaiPr_71:0d:86 (94:39:e5:71:0d:86), Dst: Routerbo_9a:47:93 (d4:ca:6d:9a:47:93)
 Internet Protocol Version 4, Src: 172.2.238.117 (172.2.238.117), Dst: 192.168.0.200 (192.168.0.200)
 User Datagram Protocol, Src Port: 65436 (65436), Dst Port: 53 (53)
 Domain Name System (query)

```

0000 d4 ca 6d 9a 47 93 94 39 e5 71 0d 86 08 00 45 00 ..m.G..9.q....E.
0010 00 3e 08 3e 00 00 80 11 d6 88 ac 02 ee 75 c0 a8 .>.>....u...
0020 00 c8 ff 9c 00 35 08 2a dc 53 be 71 01 00 00 01 .....5.*.S.q...
0030 00 00 00 00 00 00 03 77 77 77 08 6d 73 66 74 6e .....w ww.msftncsi.com. ....
0040 63 73 69 03 63 6f 6d 00 00 01 00 01
    
```

File: "E:\semester7\skripsiiku qos\wireshark\... Packets: 18982 - Displayed: 18982 (100.0%) - Load time: 0:00.461 Profile: Default

Capture delay Ip 172.2.238.117

Filter: `udp && ip.dst==172.2.255.255 && ip.src==172.2.238.117`

No.	Time	Source	Destination	Protocol	Length	Time delta from previous displayed frame	Info
7	0.468046000	172.2.238.117	172.2.255.255	NBNS	92	0.198633000	Name query NB ISATAP<00>
13	1.232434000	172.2.238.117	172.2.255.255	NBNS	92	0.554854000	Name query NB ISATAP<00>
28	2.309151000	172.2.238.117	172.2.255.255	NBNS	92	1.076717000	Name query NB ISATAP<00>
29	3.073187000	172.2.238.117	172.2.255.255	NBNS	92	0.764036000	Name query NB ISATAP<00>
32	3.837535000	172.2.238.117	172.2.255.255	NBNS	92	0.764348000	Name query NB ISATAP<00>
45	4.914403000	172.2.238.117	172.2.255.255	NBNS	92	1.076868000	Name query NB ISATAP<00>
50	5.678317000	172.2.238.117	172.2.255.255	NBNS	92	0.763914000	Name query NB ISATAP<00>
57	6.442670000	172.2.238.117	172.2.255.255	NBNS	92	0.764353000	Name query NB ISATAP<00>
63	7.519403000	172.2.238.117	172.2.255.255	NBNS	92	1.076733000	Name query NB ISATAP<00>
68	8.283484000	172.2.238.117	172.2.255.255	NBNS	92	0.764081000	Name query NB ISATAP<00>
70	9.047828000	172.2.238.117	172.2.255.255	NBNS	92	0.764344000	Name query NB ISATAP<00>
83	10.125751000	172.2.238.117	172.2.255.255	NBNS	92	1.077923000	Name query NB ISATAP<00>
86	10.888577000	172.2.238.117	172.2.255.255	NBNS	92	0.762826000	Name query NB ISATAP<00>
90	11.052942000	172.2.238.117	172.2.255.255	NBNS	92	0.764365000	Name query NB ISATAP<00>
100	12.731445000	172.2.238.117	172.2.255.255	NBNS	92	1.078503000	Name query NB ISATAP<00>
105	13.493697000	172.2.238.117	172.2.255.255	NBNS	92	0.762252000	Name query NB ISATAP<00>
111	14.258069000	172.2.238.117	172.2.255.255	NBNS	92	0.764372000	Name query NB ISATAP<00>
119	15.334791000	172.2.238.117	172.2.255.255	NBNS	92	1.076722000	Name query NB ISATAP<00>
123	16.098846000	172.2.238.117	172.2.255.255	NBNS	92	0.764053000	Name query NB ISATAP<00>
125	16.863219000	172.2.238.117	172.2.255.255	NBNS	92	0.764373000	Name query NB ISATAP<00>
131	17.939912000	172.2.238.117	172.2.255.255	NBNS	92	1.076693000	Name query NB ISATAP<00>
135	18.703954000	172.2.238.117	172.2.255.255	NBNS	92	0.764042000	Name query NB ISATAP<00>
140	19.468336000	172.2.238.117	172.2.255.255	NBNS	92	0.764382000	Name query NB ISATAP<00>

Frame 7: 92 bytes on wire (736 bits), 92 bytes captured (736 bits) on interface 0
 Ethernet II, Src: HonHaiPr_71:0d:86 (94:39:e5:71:0d:86), Dst: Broadcast (ff:ff:ff:ff:ff:ff)
 Internet Protocol Version 4, Src: 172.2.238.117 (172.2.238.117), Dst: 172.2.255.255 (172.2.255.255)
 User Datagram Protocol, Src Port: 137 (137), Dst Port: 137 (137)
 NetBIOS Name Service

```

0000 ff ff ff ff ff ff 94 39 e5 71 0d 86 08 00 45 00 .....9.q....E.
0010 00 4e 08 42 00 00 80 11 eb e2 ac 01 75 ac 02 .N.B....u...
0020 ff ff 00 89 00 89 00 3a b0 6b c0 0e 01 10 00 01 .....:k.....
0030 00 00 00 00 00 00 20 45 4a 46 44 45 42 46 45 45 .....E JFDEBFEE
0040 42 46 41 43 41 43 41 43 41 43 41 43 41 43 41 43 BFACACAC ACACACAC
0050 41 43 41 43 41 41 00 00 00 00 01 ACACAAA...
    
```

File: "E:\semester7\skripsiiku qos\wireshark\... Packets: 18982 - Displayed: 95 (0.5%) - Load time: 0:00.543 Profile: Default

Capture delay Ip 172.2.238.38

Wireshark capture showing NetBIOS traffic. The filter is `udp && ip.dst==172.2.255.255 && ip.src==172.2.238.38`. The capture shows a series of Name Query and Registration NB ISATAP-000 packets from 172.2.238.38 to the broadcast address 172.2.255.255.

No.	Time	Source	Destination	Protocol	Length	Time delta from previous displayed frame	Info
523	102.842393	172.2.238.38	172.2.255.255	NBNS	92	0.000000000	Name query NB ISATAP-000
524	102.850933	172.2.238.38	172.2.255.255	NBNS	110	0.208534000	Registration NB WORKGROUP-000
525	102.857227	172.2.238.38	172.2.255.255	NBNS	110	0.006294000	Registration NB ASUS-PC-200
532	103.359602	172.2.238.38	172.2.255.255	NBNS	92	0.502375000	Name query NB ISATAP-000
534	103.361900	172.2.238.38	172.2.255.255	NBNS	92	0.002298000	Name query NB WPAD-000
535	103.665657	172.2.238.38	172.2.255.255	NBNS	110	0.303757000	Registration NB ASUS-PC-000
536	103.667116	172.2.238.38	172.2.255.255	NBNS	110	0.001459000	Registration NB WORKGROUP-000
540	104.175199	172.2.238.38	172.2.255.255	NBNS	92	0.508083000	Name query NB WPAD-000
543	104.381230	172.2.238.38	172.2.255.255	NBNS	110	0.206031000	Registration NB ASUS-PC-000
544	104.382568	172.2.238.38	172.2.255.255	NBNS	110	0.001338000	Registration NB ASUS-PC-200
547	104.891094	172.2.238.38	172.2.255.255	NBNS	92	0.508526000	Name query NB WPAD-000
553	105.402437	172.2.238.38	172.2.255.255	NBNS	92	0.511343000	Name query NB WPAD-000
563	107.041151	172.2.238.38	172.2.255.255	NBNS	92	1.638714000	Name query NB WPAD-000
564	107.042284	172.2.238.38	172.2.255.255	NBNS	92	0.001133000	Name query NB ISATAP-000
566	108.470599	172.2.238.38	172.2.255.255	NBNS	92	1.428315000	Name query NB ISATAP-000
568	110.213795	172.2.238.38	172.2.255.255	NBNS	92	1.743196000	Name query NB ISATAP-000
569	111.130195	172.2.238.38	172.2.255.255	NBNS	92	0.916400000	Name query NB ISATAP-000
571	112.052238	172.2.238.38	172.2.255.255	NBNS	92	0.922043000	Name query NB ISATAP-000
573	112.767301	172.2.238.38	172.2.255.255	NBNS	92	0.715063000	Name query NB ISATAP-000
575	113.584077	172.2.238.38	172.2.255.255	NBNS	92	0.816776000	Name query NB ISATAP-000
580	114.606853	172.2.238.38	172.2.255.255	NBNS	92	1.022776000	Name query NB ISATAP-000
582	115.322663	172.2.238.38	172.2.255.255	NBNS	92	0.715810000	Name query NB ISATAP-000
594	117.163669	172.2.238.38	172.2.255.255	NBNS	92	1.841006000	Name query NB ISATAP-000

Frame 523: 92 bytes on wire (736 bits), 92 bytes captured (736 bits) on interface 0
 Ethernet II, Src: HonHaiPr_0d:56:00 (54:33:30:0d:56:00), Dst: Broadcast (ff:ff:ff:ff:ff:ff)
 Internet Protocol Version 4, Src: 172.2.238.38 (172.2.238.38), Dst: 172.2.255.255 (172.2.255.255)
 User Datagram Protocol, Src Port: 137 (137), Dst Port: 137 (137)
 NetBIOS Name Service

```

0000 ff ff ff ff ff ff ff ff 54 35 30 0d 56 00 08 00 45 00 .....T5 0.V...E.
0010 00 4e 0a 9c 00 00 80 11 e9 d7 ac 02 ee 26 ac 02 ..N.....&...&
0020 ff ff 00 89 00 89 08 3a 7f fd f8 cb 01 10 00 01 .....:w.....&
0030 00 00 00 00 00 00 20 45 4a 46 44 45 42 46 45 45 .....E 3FDEBFEE
0040 42 46 41 43 41 43 41 43 41 43 41 43 41 43 41 43 BFACACAC ACACACAC
0050 41 43 41 43 41 41 00 00 20 01 ACACAAA. ...
  
```

Capture delay Ip 172.2.238.88

Wireshark capture showing NetBIOS traffic. The filter is `udp && ip.dst==172.2.255.255 && ip.src==172.2.238.88`. The capture shows a series of Name Query and Host Announcement 7-PC, workstation, Server, NT workstation, Pote packets from 172.2.238.88 to the broadcast address 172.2.255.255.

No.	Time	Source	Destination	Protocol	Length	Time delta from previous displayed frame	Info
447	85.7676880	172.2.238.88	172.2.255.255	NBNS	92	0.000000000	Name query NB LUCKY-PC<20>
452	86.4843570	172.2.238.88	172.2.255.255	NBNS	92	0.716669000	Name query NB LUCKY-PC<20>
454	87.3020150	172.2.238.88	172.2.255.255	NBNS	92	0.817658000	Name query NB LUCKY-PC<20>
488	97.2222910	172.2.238.88	172.2.255.255	BROWSE	243	9.920276000	Host Announcement 7-PC, workstation, Server, NT workstation, Pote
1757	286.114376	172.2.238.88	172.2.255.255	NBNS	92	188.892085000	Name query NB 7-PC<1c>
1763	286.830931	172.2.238.88	172.2.255.255	NBNS	92	0.716555000	Name query NB 7-PC<1c>
1771	287.557901	172.2.238.88	172.2.255.255	NBNS	92	0.726970000	Name query NB 7-PC<1c>
2350	332.139041	172.2.238.88	172.2.255.255	BROWSE	229	44.581140000	Browser Election Request
2371	333.160187	172.2.238.88	172.2.255.255	BROWSE	229	1.021146000	Browser Election Request
2381	334.080196	172.2.238.88	172.2.255.255	BROWSE	229	0.920009000	Browser Election Request
2405	335.205176	172.2.238.88	172.2.255.255	BROWSE	229	1.124980000	Browser Election Request
2413	336.127546	172.2.238.88	172.2.255.255	BROWSE	229	0.922370000	Browser Election Request
2420	337.134943	172.2.238.88	172.2.255.255	NBNS	110	1.027397000	Registration NB WORKGROUP<1d>
2430	337.865350	172.2.238.88	172.2.255.255	NBNS	110	0.710407000	Registration NB WORKGROUP<1d>
2437	338.580133	172.2.238.88	172.2.255.255	NBNS	110	0.714783000	Registration NB WORKGROUP<1d>
2448	339.397206	172.2.238.88	172.2.255.255	NBNS	110	0.817073000	Registration NB WORKGROUP<1d>
2462	340.113093	172.2.238.88	172.2.255.255	NBNS	110	0.715887000	Registration NB <01><02>_MSBROWSE__<02><01>
2474	340.830184	172.2.238.88	172.2.255.255	NBNS	110	0.717091000	Registration NB <01><02>_MSBROWSE__<02><01>
2484	341.647178	172.2.238.88	172.2.255.255	NBNS	110	0.816994000	Registration NB <01><02>_MSBROWSE__<02><01>
2493	342.369299	172.2.238.88	172.2.255.255	NBNS	110	0.722121000	Registration NB <01><02>_MSBROWSE__<02><01>
2502	343.084992	172.2.238.88	172.2.255.255	BROWSE	217	0.715693000	Request Announcement 7-PC
2503	343.087390	172.2.238.88	172.2.255.255	BROWSE	217	0.002398000	Request Announcement 7-PC
2504	343.090123	172.2.238.88	172.2.255.255	BROWSE	247	0.002733000	Domain/workaroup Announcement WORKGROUP, NT workstation, Domain E

Frame 488: 243 bytes on wire (1944 bits), 243 bytes captured (1944 bits) on interface 0
 Ethernet II, Src: Liteont_d7:36:86 (70:f1:a1:d7:36:86), Dst: Broadcast (ff:ff:ff:ff:ff:ff)
 Internet Protocol Version 4, Src: 172.2.238.88 (172.2.238.88), Dst: 172.2.255.255 (172.2.255.255)
 User Datagram Protocol, Src Port: 138 (138), Dst Port: 138 (138)
 NetBIOS Datagram Service

```

0000 ff ff ff ff ff ff 70 f1 a1 d7 36 86 08 00 45 00 .....p...6...E.
0010 00 e5 15 a7 00 00 80 11 de 03 ac 02 58 ac 02 .....X.....X..
0020 ff ff 00 8a 00 8a 00 d1 eb 08 11 02 c2 c2 ac 02 .....:.....:..
0030 ee 58 00 8a 00 bb 00 00 20 44 48 43 4e 46 41 45 ..X.....DHCFNAE
0040 44 43 41 43 41 43 41 43 41 43 41 43 41 43 41 43 DCACACAC ACACACAC
0050 41 43 41 43 41 43 41 43 41 00 20 46 48 45 50 46 ACACACAC A.FHEPFF
  
```