

LAMPIRAN

Maesin Plastik suntik dan Proses Pembuatan spesimen



LAMPIRAN

Hasil Spesimen dan Proses Uji Tarik



LAMPIRAN

Proses Uji Struktur Mikro



LAMPIRAN

Tabel dan Grafik Hasil Uji Tarik

Bahan HDPE 50%, PET 30% dan Serat Pelepah Pisang 20%

No	T (mm)	W (mm)	Beban max (N)
1	5	12	250,8
2	5	12	339,3
3	5	12	360,1
Rata-rata			316,7

Bahan HDPE 60%, PET 25% dan Serat Pelepah Pisang 15%

No	T (mm)	W (mm)	Beban max (N)
1	5	12	364,7
2	5	12	459,3
3	5	12	487,8
Rata-rata			437,2

Bahan HDPE 65%, PET 20% dan Serat Pelepah Pisang 15%

No	T (mm)	W (mm)	Beban Max (N)
1	5	12	535
2	5	12	650,6
3	5	12	540,1
Rata-rata			575,2

Bahan HDPE Murni

No	T (mm)	W (mm)	Beban Max (N)
1	5	12	1186,7

Bahan PET Murni

No	T (mm)	W (mm)	Beban Max (N)
1	5	12	95,7

Perhitungan Tegangan Bahan HDPE 50%, PET 30% dan Serat Pelepah
Pisang 20%

No	T (mm)	W (mm)	Beban max (N)	Luas Ao	Tegangan Uji tarik N/mm ²
1	5	12	250,8	60	4,18
2	5	12	339,3	60	5,655
3	5	12	360,1	60	6,001
Rata-rata					5,728

Perhitungan Tegangan Bahan HDPE 60%, PET 25% dan Serat Pelepeh

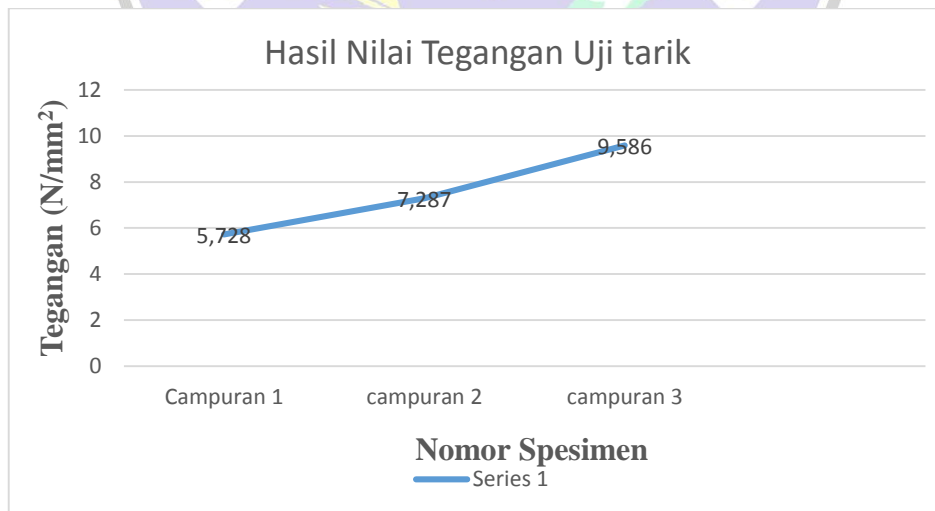
Pisang 15%

No	T (mm)	W (mm)	Beban max (N)	Luas Ao	Tegangan Uji tarik N/mm ²
1	5	12	364,7	60	8,13
2	5	12	459,3	60	6,078
3	5	12	487,8	60	7,655
Rata-rata					7,287

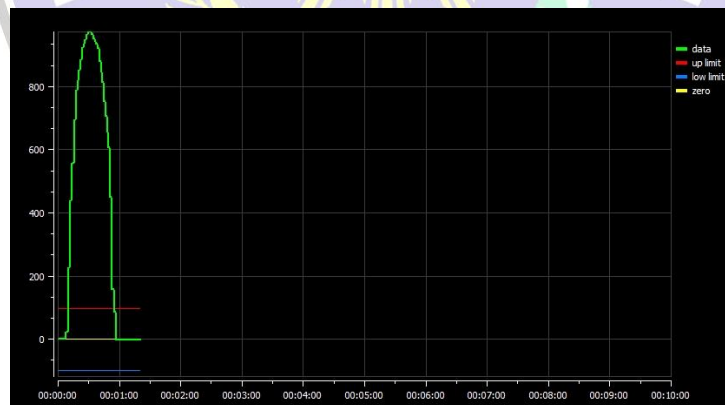
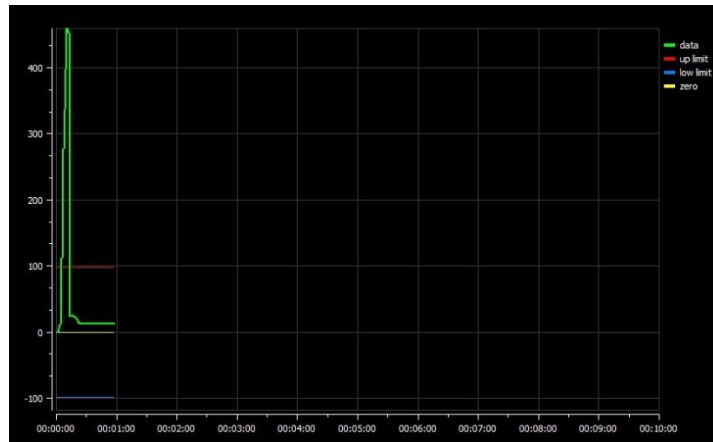
Perhitungan Tegangan Bahan HDPE 65%, PET 20% dan Serat Pelepeh

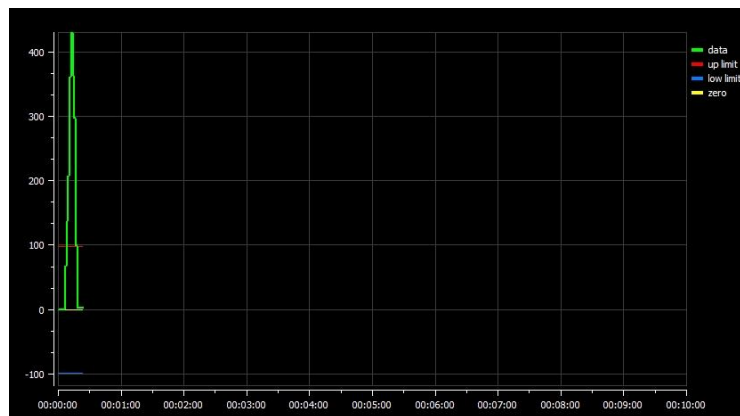
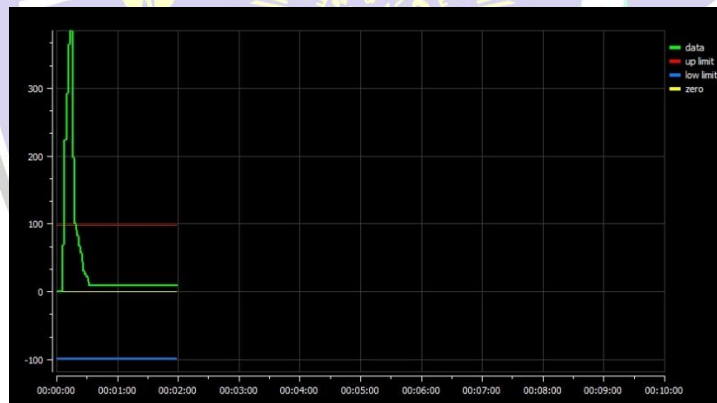
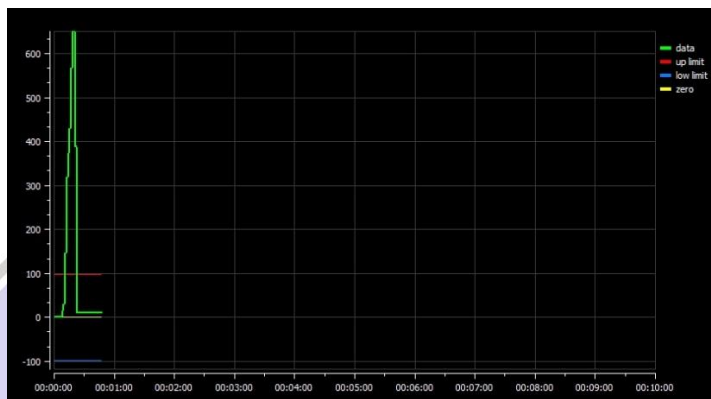
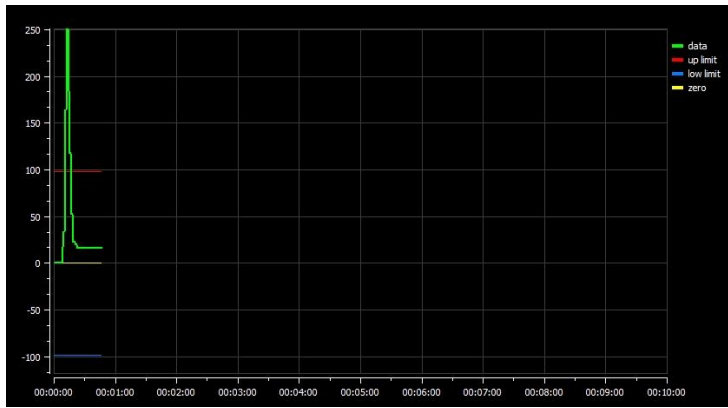
Pisang 15%

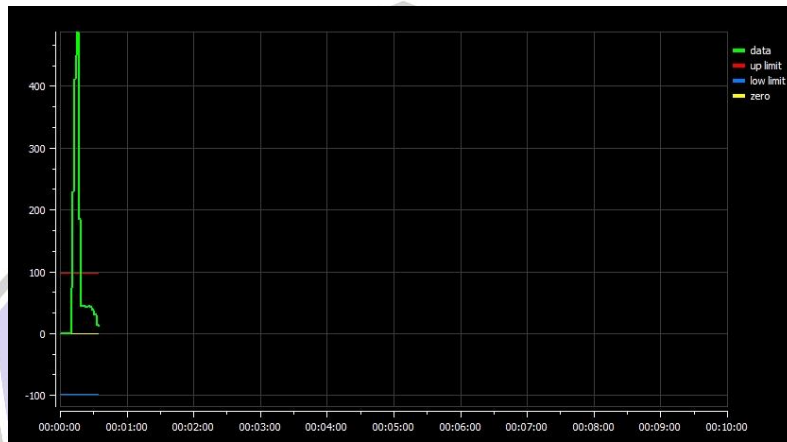
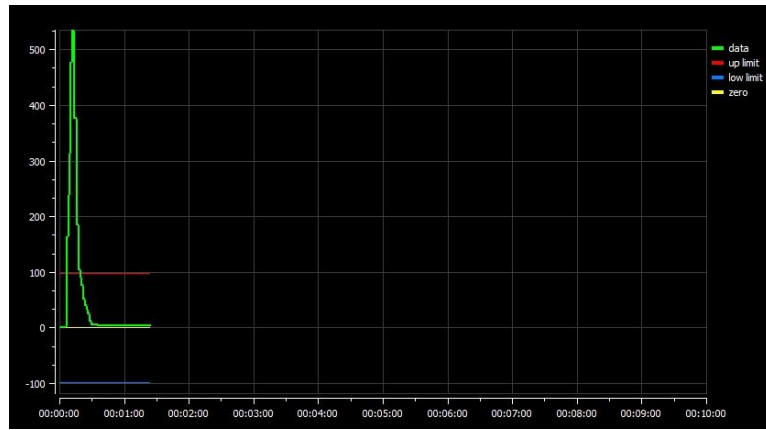
No	T (mm)	W (mm)	Beban max (N)	Luas Ao	Tegangan Uji tarik N/mm ²
1	5	12	535	60	8,916
2	5	12	650,6	60	10,843
3	5	12	540,1	60	9,001
Rata-rata					9,586



LAMPIRAN

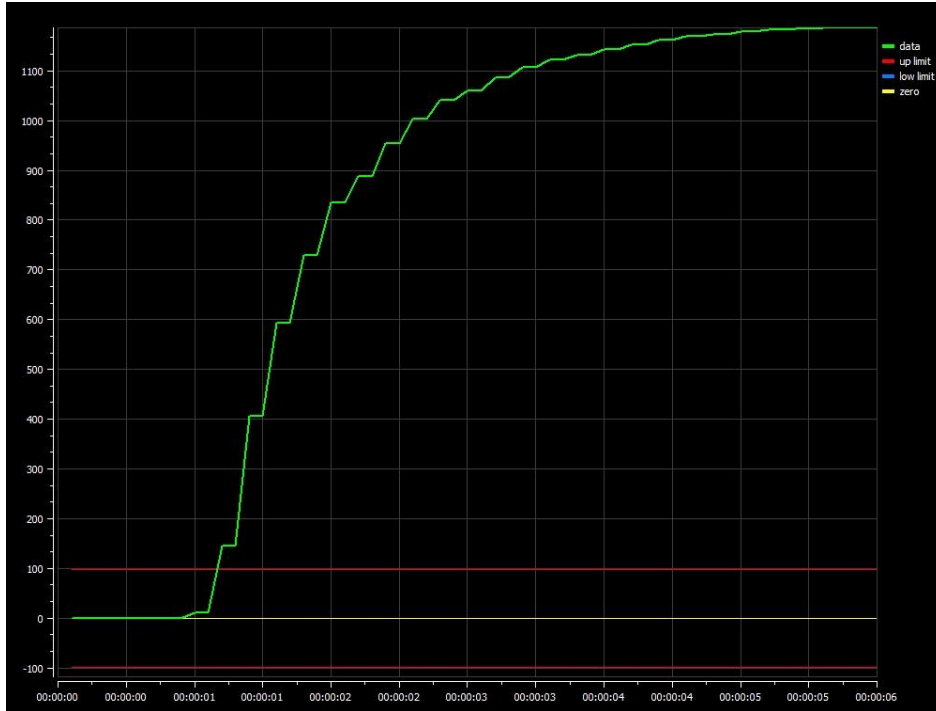






LAMPIRAN

Grafik HDPE Murni



Grafik PET Murni

